

INTERNATIONAL CARE MINISTRIES **2011-12 ANNUAL REPORT**



**INTERNATIONAL CARE MINISTRIES (ICM)** has been serving the poor in the Philippines since 1992.

Teaching essential life skills through a supportive, community-based approach, ICM unleashes unfulfilled potential in impoverished communities.

We partner with local leaders from 2,500 slums to empower more than 100,000 people every year to fight the bondage of poverty. After participating in our transforming values, health and livelihood training program, our families experience a 42% reduction in reported physical abuse, a 26% reduction in serious illness and a 33% increase in household income.

ICM provides help, inspires hope, and creates change.



## Table of Contents

<b>2</b> <i>where we work</i>	<b>20</b> <i>network</i>
<b>4</b> <i>those we help</i>	<b>22</b> <i>mercy programs</i>
<b>6</b> <i>our strategy</i>	<b>24</b> <i>governance</i>
<b>8</b> <i>transform program</i>	<b>28</b> <i>financials</i>
<b>14</b> <i>jumpstart program</i>	<b>30</b> <i>our donors</i>
<b>18</b> <i>malnourished children outreach</i>	<b>31</b> <i>how to give</i>

WHERE  
WE WORK

**1.4 billion people around the world  
live on less than US\$1.25 per day.**



**THE PHILIPPINES: 12th most populated country in the world**

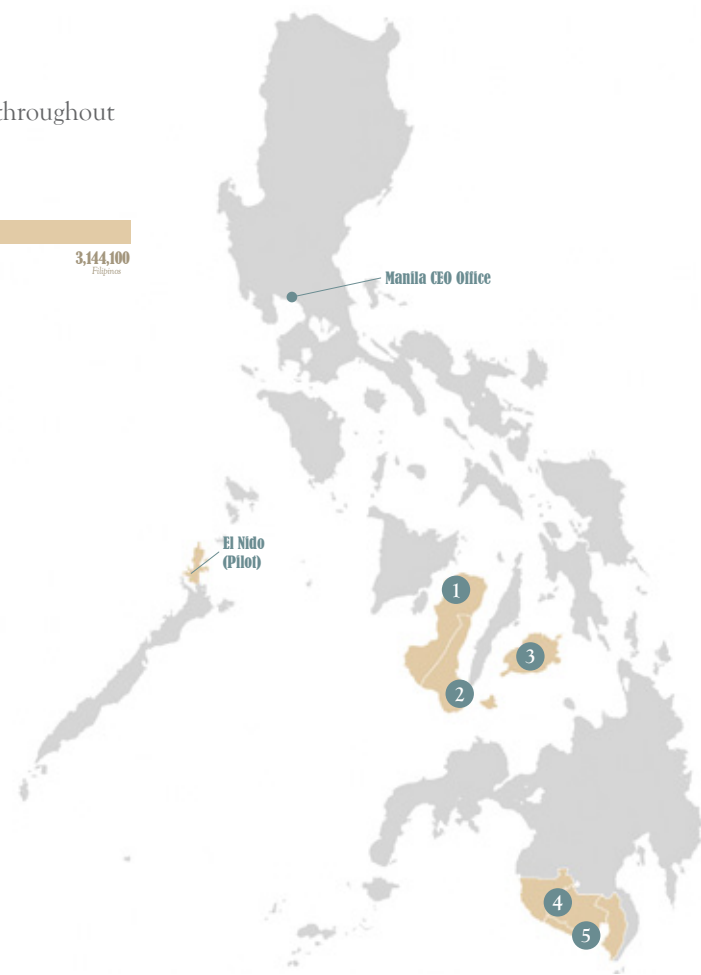
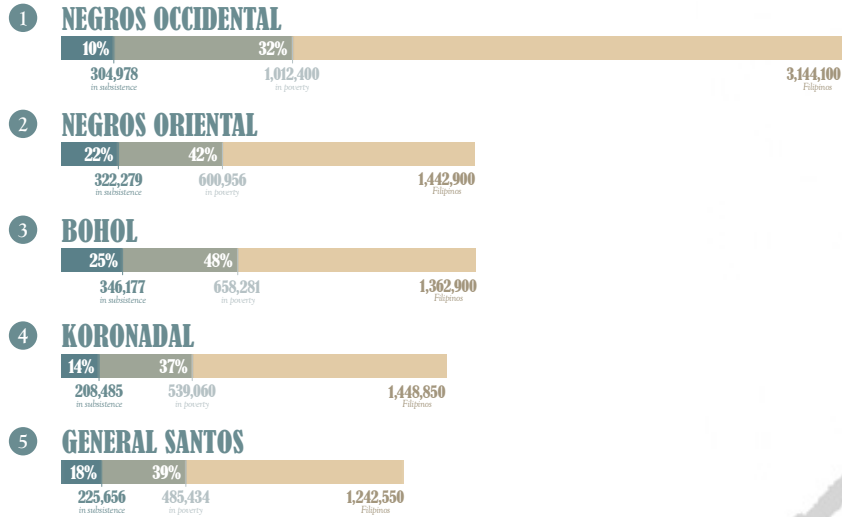
**94**  
**MILLION**  
FILIPINOS

**25**  
**MILLION**  
LIVE IN POVERTY  
<US\$0.75 per day

**10**  
**MILLION**  
LIVE IN SUBSISTENCE  
only enough money to pay for food  
<US\$0.54 per day

# ICM Bases

ICM serves people living below subsistence in 2,500 communities throughout Central and Southern Philippines.



## OUR PROVINCES

### Family Members in ICM Strategic Programs

Population:	8,641,300
In Poverty:	3,296,131 (38%)
In Subsistence:	1,407,573 (16%)
2009-10:	50,031 (4%)
2010-11:	66,109 (5%)
2011-12 (projected):	94,392 (7%)
<b>3 Year Total:</b>	<b>210,532 (16%)</b>

THOSE  
WE HELP



# ICM is committed to effectiveness. We aim to change lives.

In order to quantify the impact of our programs, ICM has interviewed 32,000 of our participants throughout the past year, compiling 4 million individual responses to our questions. This detailed demographic data gives ICM an unparalleled ability to measure the impact of our programs and to tailor future programs for enhanced effectiveness.

## Families that enter ICM's programs are living in extreme poverty.

**37¢** average daily income  
of participants

**58%** do nothing to purify  
their drinking water

**34%** live with dirt floors  
and scrap roofs

**34%** go to bed hungry  
at least once a week

**25%** of mothers have had  
at least one child die

**8%** of mothers have had  
more than one child die

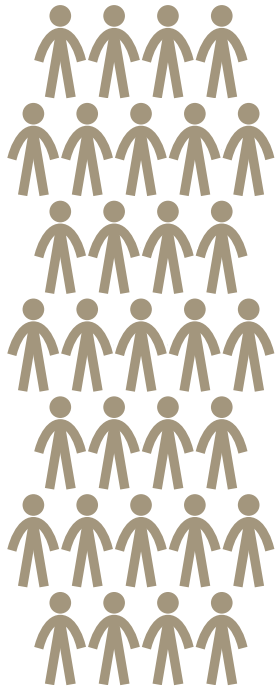
**“ICM is one of the few nonprofits who are systematic and professional about measuring their overall impact. You are what you reward, and ICM staff are encouraged to think they are doing their job if they really are making a difference with the poorest of the poor.”**

**PETER CLARK**  
M (Public Policy) Harvard  
PhD (Social Science) Cornell

OUR  
STRATEGY

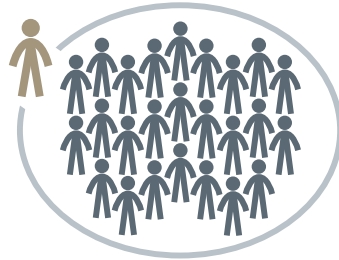
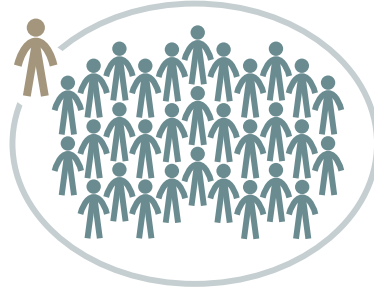


ICM partners with community leaders in slum neighborhoods.



**ICM NETWORK**  
comprised of 2,500 pastors

These leaders invite their poorest neighbors to participate.



ICM delivers three strategic training programs...

Transform Program



Values Health Livelihood CURRICULUM

Jumpstart Program



Values Health Livelihood CURRICULUM

Kindergarten Program

Malnourished Children Outreach



Values Health Livelihood CURRICULUM

Feeding Program

...to benefit more than 100,000 family members.

**480 Communities**

reaching 14,880 families  
benefitting 80,352 family members

**80 Communities**

reaching 2,000 families  
benefitting 10,800 family members

**235 Communities**

reaching 2,350 families  
benefitting 12,690 family members

# TRANSFORM PROGRAM

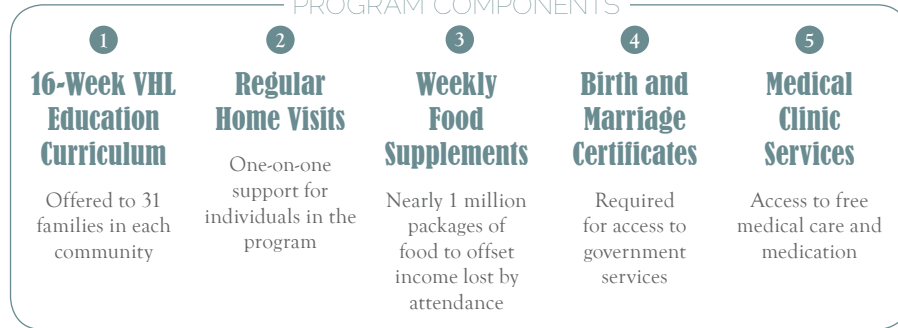


# TRANSFORM PROGRAM

Those in ICM's programs live in extreme poverty. Providing jobs or food or access to clean water isn't enough. They also need education. They need better hygiene and health practices. They need access to medical care. They need a community of sustained support. They need to know there is a way out. They need hope.

ICM's Transform Program is designed to address the holistic needs of those living in such adversity. The centerpiece of the Transform Program is our VHL education curriculum emphasizing positive Values, Health practices and Livelihood skills.

## PROGRAM COMPONENTS



Cost Per Community (Cash):  
Annual Cost:

PHP65K / HK\$12K / US\$1.5K  
PHP81.4M / HK\$14.8M / US\$1.9M

2010-11  
statistics

**412**  
transform  
communities

**10,561**  
participating  
families

**57,029**  
family members  
benefitted

2011-12  
targets

**480**  
transform  
communities

**14,880**  
participating  
families

**80,352**  
family members  
benefitting

**“ICM works in an integrated way, drawing on the heart of development, the soul of faith and the head of business to generate results that we wouldn't get with only development, only faith or only business. In my 26 years in this work, in 108 countries, I've never seen a more promising approach to fighting poverty.”**

**DAVID LARSON**  
Int'l Projects Manager (Asia & Near East)  
Cross International

“ICM’s VHL equips people with skills leading to stronger relationships, improved problem solving and a greater sense of well-being. One person’s improved way of thinking can cause positive change in an entire community.”

RICHARD HIRST, M Org Psych, Macquarie U



“There has been a very big change in our lives ever since ICM came here. I now realize that I am more than just an ordinary housewife. I have more friends and am more confident.”

MARY JANE

from General Santos, is one of 17 siblings, has a 2nd grade education, and is the mother of three.

## Values

The poor need to overcome the negative attitudes and behaviors that accompany poverty. Feelings of passivity and inferiority are rampant. ICM’s values curriculum, based on a Biblical worldview, emphasizes the inherent value of every individual, regardless of age, gender, or income level. It promotes forgiveness, patience, self-control and perseverance. The values curriculum is taught by the pastor of the local church hosting the ICM program. Attendance at the values training is encouraged but not required.

Participants gain a wealth of “social capital” from the support provided by the community hosting the Transform Program. The relationships and connections formed in this new social network create an environment conducive to behavior change. Positive steps are reinforced and encouraged by others. Change becomes a possibility. Hope becomes a reality. There is great significance in knowing there are others who care – people who say, “you are not alone.”

### SURVEY RESULTS

**42%** less reported physical abuse in homes

**31%** increase in “very satisfactory” friendships

**22%** fewer people living with dirt floors

**7 MONTHS LATER**

Social capital benefits (families, friends, relatives, government officials) remain strong and reported physical abuse further reduced.

# Health

Many health concerns faced by those living in extreme poverty can be resolved by education about basic health issues. ICM's Primary Health Education training module addresses UN identified health care needs of the poor.

## Family Health

- Childhood growth/development, immunizations, family planning, STDs, HIV

## Hygiene and Nutrition

- Dental care, hygiene, nutrition, exercise, malnutrition, vitamin deficiencies

## Common Illnesses

- Recognition, prevention and treatment  
- Tuberculosis, mosquito-borne diseases, respiratory and digestive tract illnesses, skin problems

## First Aid

- Fever and convulsions, injury prevention, choking, resuscitation

### SURVEY RESULTS

**26%** *less people with serious illnesses*

**43%** *reduction in very dirty kitchens*

**25%** *more people brush their teeth*

**7 MONTHS LATER** *Health practices (use of soap and toothbrushes, clean clothing, clean kitchens) remain strong.*



**“My kids are eating healthier and they are now rarely sick!”**

**RONNIE**

*is married with two children and works as a gravel digger. He says ICM's health lessons taught him about nutrition and the livelihood lessons taught him how to grow healthy food. He now earns US\$70 per month selling vegetables.*



# “Unemployment and underemployment are the key determinants of poverty.”

ASIAN DEVELOPMENT BANK



*Elwansea's life has improved significantly since joining ICM's transform program. Using skills that she learned through the livelihood lessons, she grows and sells organic vegetables and repackages household cleaning products for resale. Her family is eating better and she has started exercising. She is committed to maintaining her new lifestyle.*

## Livelihood

The biggest challenge facing those living in poverty is sustainable livelihood. ICM's hands-on livelihood training module provides instruction which, if implemented with reasonable commitment, results in income streams for participants.

### Sustainable Organic Farming

- Hands on lessons in organic fertilizer production (through composting with worms). The worms and the compost can be sold for profit.
- Interactive training in organic container farming and in-ground farming techniques. The organic produce is used for family consumption or for sale.

### Small Business Livelihood Options

- Marketing, family budgeting, saving, debt management
- Production of detergent powder, dishwashing liquid, fabric softener
- Food products: local snack preparation and packaging for sale

### SURVEY RESULTS

**33%** increase in avg. household income

**46%** reduction in underweight children

**29%** less people who go to bed hungry several times a week

The total income of ICM participant households increased by **US\$4.1 MILLION** This amount is more than ICM's cash operating budget.

**7 MONTHS LATER**

Household income deteriorates somewhat but materially better than before VHL. Hunger and underweight children dramatically reduced.



In 2010-11, ICM families have  
produced **50,000 kilos** of organic fertilizer  
to start **10,000** new personal vegetable gardens  
plus **72,000 m<sup>2</sup>** of community farms  
using **13.5 million** seeds from ICM

# JUMPSTART PROGRAM



# JUMPSTART PROGRAM

In very poor families, parents' number one priority is feeding their children. Often education is not prioritized - 15% of poor Filipino children never attend school at all. Impoverished children don't enjoy such luxuries as children's books, educational toys and computers. This lack of educational stimuli combined with early childhood malnutrition leaves poor children at a disadvantage when it's time for school.

ICM's Jumpstart Program gives children living in poverty an academic "jumpstart" on their lifetime of learning. The Asian Development Bank says that the longer a child stays in school, the less likely they will live their lives in extreme poverty. ICM's Jumpstart Program seeks to instill graduates with a love of learning and an expectation of academic success that gives them positive footing when entering first grade. Older out-of-school children are given priority when selecting students.

## PROGRAM COMPONENTS

1

### 10-Month Academic Curriculum

Full preparation for year one of public school

2

### Daily Hot Meals

A lunch and a snack, prepared by mothers

3

### Medical Checks

Deworming, immunization checks and health monitoring

4

### Supplies and Classroom Setup

Uniforms, stationery, backpacks, shoes; chairs, tables, chalkboards, books

5

### VHL Education Curriculum for Parents

Weekly practical lessons on Values, Health, and Livelihood

Cost Per Learning Center (Cash): *PHP250K / HK\$45K / US\$6.0K*  
 Annual Cost: *PHP27.8M / HK\$5.1M / US\$646K*

2010-11 statistics

2011-12 targets

**80**

preschools operated

**80**

preschools to operate

**1,804**

students graduated

**2,000**

students to graduate

**1,558**

parents attended VHL classes

**2,000**

parents to attend VHL classes

**8,413**

family members benefitted

**10,800**

family members benefitting

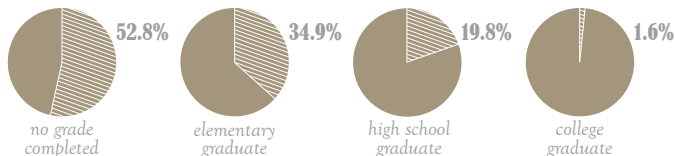


**“The school made my daughter dream bigger dreams. I want to do all I can to make those dreams come true.”**

*A mother of a student at the Jacob Schapero Learning Center*

**“With each additional level of schooling reached, the poverty incidence falls.”**

**ASIAN DEVELOPMENT BANK**



## Elementary Scholars

The goal of ICM’s Elementary Scholar Program is to keep our ICM learning center graduates in public school as long as possible, decreasing the probability they will live their lives in poverty. Since 2005, about 93% of our graduates are still attending public school.

### Each scholar receives:

- Public School Fee Scholarships for ICM Jumpstart graduates – provides ½ of yearly costs
- Saturday “homework help” – with ICM Jumpstart teachers for academic help and encouragement

Number of Elementary Scholars in 2010/11: **1,880**

Number of Elementary Scholars in 2011/12: **3,686**

Cost Per Scholar:

PHP1.5K / HK\$275 / US\$35

Annual Cost:

PHP5.6M / HK\$1.0M / US\$130K





*Gigie and her husband Alonzo have four children. Alonzo suffered from a stroke and is paralyzed on one side. Gigie works as a sugarcane farm laborer to support the family. She earns less than US\$1 per day. Their third child, 8-year-old John, has never attended school. But this year he is enrolled in ICM's Good Shepherd Learning Center in Bacolod. John is excited that he is finally able to attend school.*

MALNOURISHED  
CHILDREN  
OUTREACH



# MALNOURISHED CHILDREN OUTREACH

ICM's Malnourished Children Outreach (MCO) saves lives. In coordination with local government officials, ICM identifies ten severely underweight children in each community and provides them with a nutritious meal each day. At the end of four months, two-thirds of these children will have increased their weight by at least 15%, the threshold recommended by UNICEF. This MCO program has long lasting effects: five months after the completion of the feeding program, most of the children had at least maintained their weight gain.

Meals are prepared by the partnering host church community. The food is provided through ICM's partnership with Feed My Starving Children (FMSC) and Kids Against Hunger (KAH), two US-based non-profit organizations. FMSC and KAH have together promised 19 forty-foot containers of "nutripacks", which represents more than 5 million meals. Negros Navigation provides free shipping of the food from Manila to each of ICM's bases.

In 2011/12, ICM is piloting a modified Transform-VHL course specifically for mothers of MCO children. The new curriculum emphasizes the nutritional needs of children and will be offered in 60 communities.

Cost Per Community (Cash): *PHP15.6K / HK\$2.8K / US\$400*  
 Annual Cost: *PHP6.3M / HK\$1.1M / US\$146K*

2010-11  
statistics

**68**  
MCO  
communities

**667**  
children  
reached

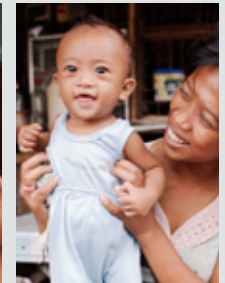
**1,871,592**  
donated meals  
(incl. Transform)

2011-12  
targets

**235**  
MCO  
communities

**2,350**  
children  
reached

**5,140,800**  
donated meals  
(incl. Transform)



**Name:** Delrino Ruiz

**Age:** 7 months

**Started in June 2011:** 4.8 kg (10.5 lbs)

**One month later:** 6 kg (13 lbs)

**Three months later:** 7 kg (15.5 lbs)

# NETWORK



# NETWORK

Every year, ICM reaches around 100,000 people with its programs that serve the poor. ICM's extensive reach is only possible due to our strategy of partnering with the existing infrastructure of local churches found in urban slums, remote rural villages and coastal fishing communities throughout the Philippines. ICM has 2,500 churches in its network.

All of ICM's programs are offered to the poor through these partnering churches. The success or failure of our programs is largely dependent on the commitment of the pastors and their church members. ICM, therefore, has a significant interest in building up the capacity of these pastors to enable them to more effectively serve their communities.

## THRIVE PROGRAM

- Monthly day-long meetings for the pastors in the ICM Network.
- Provides program accountability and training
- Professional association of regional pastors – fellowship, encouragement and support
- Other training benefits include film showing and children's education materials
- Pastors receive health insurance for their families

## ICM ACADEMY

- Two day seminars providing topic specific training (marriage seminars, counseling skills, leadership training, teaching methods)
- Training provided by other non-profits

Cost Per Partner Church: *PHP8.7K / HK\$1.6K / US\$200*

Annual Cost: *PHP21.7M / HK\$4.0M / US\$505K*

2010-11  
statistics

**2,325**

*partner  
churches*

**268**

*Thrive  
meetings held*

**945**

*avg. monthly  
Thrive attendance*

**13**

*ICM Academy  
seminars held*

2011-12  
targets

**2,500**

*partner  
churches*

**300**

*Thrive  
meetings*

**1,250**

*avg. monthly  
Thrive attendance*

**60**

*ICM Academy  
seminars*

**“Thanks to ICM, I have learned to hold each of the very poor families we work with right here in my heart. They are now part of our family. We have a relationship with each of them and will work with them even when the program ends.”**

**ICM PARTNER PASTOR IN NEGROS OCCIDENTAL**

MERCY  
PROGRAMS



Sometimes people just need help. ICM's Mercy Programs provide special assistance for those whose problems have spun out of their control.

2010-11  
statistics

## Special Medical Cases

- ICM's special medical case program benefits hundreds of destitute patients yearly.
- SMC patients cannot afford critical medical procedures and services.
- Conditions include burn victims, hernias, broken limbs, cancer, complicated pregnancies, and other serious medical conditions.

Annual Cost: *PHP7.0M / HK\$1.3M / US\$162K*

## Care Clinics

- ICM operates medical clinics at each of its five bases. They are open to the poor five days per week and each sees about 10,000 patients each year.
- ICM partners with local doctors who also volunteer their services to see indigent patients referred by ICM.

Annual Cost: *PHP5.8M / HK\$1.0K / US\$134K*

## Care Recovery Shelter

- Tuberculosis remains a serious medical problem in the Philippines.
- Much needed renovations at the CRS allowed ICM to evaluate program operations during its closure from March 2011. The October 2011 CRS re-launch includes in-facility and new community-based TB treatment initiatives enabling ICM to increase yearly patient capacity from 98 to 200.

Annual Cost: *PHP3.9M / HK\$711K / US\$91K*

**2,360**  
SMC patients  
helped

**2,415**  
day-long  
medical clinics

**1,280**  
pre and post  
natal checks

**54,420**  
patients treated  
at clinics

**1,193**  
newborn health  
assessments

When ICM first met 23-year old Aldrin (pictured on opposite page) in 2008, he was lying immobile on a low cot in the filthy run-down shack he shared with his mother. His legs and arms were covered with infected wounds. He was malnourished. After a cooking accident, he endured third-degree burns, which quickly festered without treatment. Over the past three years, ICM has provided specialized burn treatment, skin grafts, blood transfusions, physical therapy and counseling - and as a result, Aldrin has recovered. He is overjoyed to be walking again and is now working toward his high school equivalency and volunteering at ICM's Bacolod office.



Negros Occidental



Negros Oriental



Bohol



Koronadal



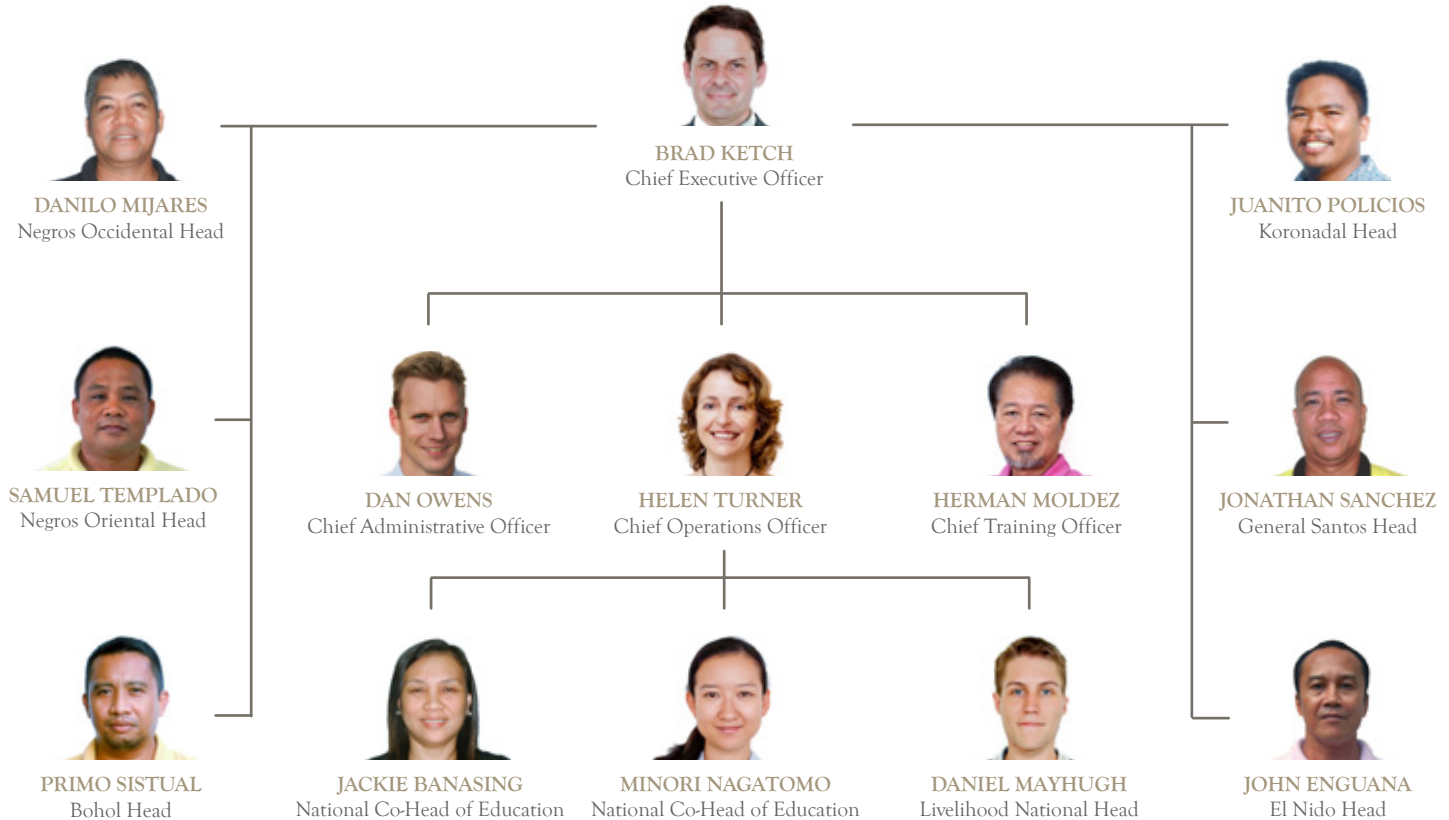
General Santos



El Nido

# Philippine Leadership

ICM is staffed by 288 local Filipinos in the Visayas and Mindanao, who are coordinated by a team of 16 based in Manila.



# International Board of Directors



**DAVID SUTHERLAND**  
Chairman of ICM Board  
Chief Financial Officer  
*Morgan Stanley Asia*



**CHARLES CALDWELL**  
Director, Human Resources  
*English Schools Foundation*



**LILY NG**  
Chief Financial Officer  
*Tiger Gate Entertainment*



**PAKITO YENEZA**



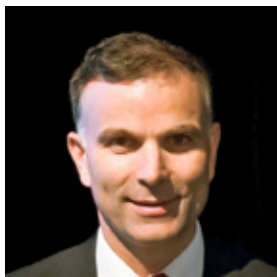
**BRAD KETCH**

*In 2008, Pakito Yeneza became ICM's CEO with an agreed three-year plan to deepen ICM's leadership. Pakito has successfully completed that objective and has accepted a new role to lead another NGO: The Global Coalition for Humanitarian Efforts in the Philippines. In his new role Pakito will continue to advocate for ICM's causes. ICM is very grateful for Pakito's leadership.*

*In Pakito's place, Brad Ketch has agreed to become ICM's new CEO and will join the International ICM Board of Directors. Until recently, Brad was the CEO of a US publicly listed company (Rim Semiconductor) and he has decades of experience leading telecommunications companies. For Brad, managing ICM is the culmination of a lifetime goal to use his leadership and strategy skills to help hundreds of thousands of the least fortunate.*



**HARRY TURNER**  
Chief Executive Officer  
*Opportunity International*  
*Global Microfinance Operations*



**MALCOLM WOOD**  
Executive Director  
Head of Investment Strategy  
*Morgan Stanley Smith Barney Australia*



**JOVI ZALAMEA**  
Executive Director  
*Goldman Sachs*

## Board of Advisors

*ICM benefits from the generous counsel of a wide range of professionals. Members of the Board of Advisors are committed to assist ICM with their wisdom and due diligence.*

Greg Anderson

Nick and Terri Appel

Augie Cheh and Maya Furumoto

Bong and Maribel Consing

Mario and Christine Damo

Grant and Fiona Elliott

Ting Guevarra-Small

Tom and Connie Kim

KT and Daphne Kuok

Hubie and Joyce Lem

Tess Lyons

Ramon and Vicki Maronilla

Dennis and Aissa Montecillo

Bill and Shannon Ng

Nick Norris and Jaclyn Jhin

Andy Ostrognai and Carmen Schiffman

Homer and Min-ye Sun

Daniel and Judith Tseung

Laetitia Yu

## International Offices

*ICM's international support teams provide essential development and communications functions which make ICM's field work possible. Team members are predominantly volunteers or are supported by independent donations.*

### HONG KONG

Deanna Sutherland, Executive Director

Chris Glover, Director of Program Support

Mike Small, Director of Development

Tess Lyons, Jumpstart Officer

Daphne Kuok, Development Officer

Shannon Ng, Development Officer

Merryl Tan, Communications Manager

Peter Fry, Travel Manager

Melissa Chan, Office Manager

Erin Manfredi, Media Officer

Heather Elliott, Media Officer

Raquel Hopton, Finance Officer

Lawrence Tuck, Travel Officer

Stephany Lau, Advancement Officer

### AUSTRALIA

Kara Wood, Executive Director (Australia)

### UNITED KINGDOM

Julie Turner, Executive Director (UK)

### UNITED STATES

David Mills, Development Officer (US)

Alice Pasternak, Finance Officer (US)

**“I have seen  
many NGOs.  
ICM is one of  
the best!”**

**CARY SUMMERS**  
CEO Nehemiah Group  
(consults on strategic  
planning for nonprofits  
all over the world)

**“ICM is shaping up  
to be one of the  
most amazing  
modern miracles  
I can think of.”**

**NURY VITTACHI**  
Founder of the Asia Literary  
Review and author of  
Feng Shui Detective novels

## NOTES:

- In 2009-10, ICM's strategic programs reached 50k people, increasing to 75K people in 2010-11 and more than 100k people in 2012, a 41% compound growth rate.
- ICM substantially increased the size of its operations while keeping support costs relatively flat. Thus, the support percentage falls from 11% in 2010-11 to only 7% in 2011-12.

# Actual Financial Results

year ended May 31, 2011 (in '000s)

	Philippine Peso (PHP)	HK Dollars (HK\$)	US Dollars (US\$)	
TRANSFORM	22,054	4,010	513	19%
Feeding	8,102	1,473	188	
Medical	5,069	922	118	
VHL	8,883	1,615	207	
UPLIFT	17,170	3,122	399	14%
Feeding	8,752	1,591	203	
VHL	8,418	1,531	196	
PRESCHOOL	25,744	4,681	599	22%
Preschool	15,898	2,891	370	
Scholarships	2,587	1,473	60	
VHL	7,259	1,473	169	
PROGRAM DEVELOPMENT	20,714	3,766	482	18%
Leader Training	9,187	1,670	214	
Demo Farm, Metrics, CCE, Films, etc.	11,527	2,096	268	
MERCY	19,121	3,477	445	16%
Medical (CRS, Clinics, Dentistry, SMC)	10,788	1,961	251	
Childrens' Shelter, MCO, Red Rope, etc.	8,333	1,515	194	
SUPPORT	13,267	2,412	308	11%
<b>TOTAL OPERATIONAL BUDGET</b>	<b>PHP 118,070</b>	<b>HK\$ 21,467</b>	<b>US\$ 2,746</b>	

### Exchange Rates:

US\$1 = HK\$7.82 = PHP43

ICM's financial statements are audited by certified public accountants in the Philippines and are available upon request. ICM's books are open to our donors. Any questions about our finances? Just ask.

# Budget

year ending May 31, 2012 (in '000s)

	Philippine Peso (PHP)	HK Dollars (HK\$)	US Dollars (US\$)	
TRANSFORM	82,496	14,999	1,919	46%
Feeding	55,898	10,163	1,300	
VHL	26,599	4,836	619	
MALNOURISHED CHILDREN OUTREACH	6,284	1,143	146	4%
JUMPSTART	31,609	5,747	736	18%
Learning Centres	17,232	3,133	401	
Scholarships	5,582	1,015	130	
VHL	8,795	1,599	205	
PROGRAM DEVELOPMENT	22,029	4,005	512	12%
Leader Training	17,251	3,137	401	
Demo Farm, Metrics, CCE, Films, etc.	4,777	869	111	
MERCY	22,836	4,152	531	13%
Medical (CRS, Clinics, SMC)	18,373	3,341	427	
Childrens' Shelter, Red Rope, etc.	4,464	812	104	
SUPPORT	12,341	2,244	287	7%
<b>TOTAL OPERATIONAL BUDGET</b>	<b>PHP 177,595</b>	<b>HK\$ 32,290</b>	<b>US\$ 4,130</b>	

## NOTES:

- ICM's increased budget for 2011-12 is almost entirely attributable to the massive increase in donated food. Value of food donated to ICM was US\$0.3M in 2010-11 and US\$1.4M in 2011-12.
- ICM's cash expenses were US\$2.422M in 2010-11 and US\$2.749M in 2011-12, a 13% increase. This increase is attributable to peso appreciation and to enhanced discipline in execution.

**“Most development nonprofits would not take on the amount of work ICM is attempting even with a significantly greater budget. Rarely have I encountered an organization doing so much, so well, with relatively limited resources.”**

**PETER CLARK, M (Public Policy) Harvard, Phd (Social Science) Cornell**

# Our Donors

ICM is generously supported by a wide variety of donors. Last year, 30% of our donations were from major donors (more than HK\$100k per individual), 43% from other Hong Kong donors, 12% from corporations, 5% from churches and 10% from USA donors. At least ten percent of ICM's income is donated by our board members.

ICM's donations from corporate donors is growing. We would like to recognize the special assistance given by the Macquarie Group Foundation, who generously fund ICM's capacity building efforts in the USA. Goldman Sachs and the Lancashire Group have each made sizable contributions to ICM, and the Royal Bank of Scotland has chosen ICM as one of its target charities. BGC made ICM one of the recipients of its charity day, and ICM is the official charity for iFortress. Among the companies that match employee contributions to ICM: Macquarie Group, Goldman Sachs, RBS and Deutsche Bank.

ICM also runs vision trips that connect donors to the children, families and communities that their gifts support. Offered throughout the year, visitors from corporations, schools, youth groups and individual families experience the impact of ICM's work. In 2010-11, ICM hosted 43 different groups with 376 people coming to paint walls, pour concrete, build toilets, train teachers, distribute goods, organize children's camps and teach health and livelihood lessons to program participants.



Morgan Stanley



Macquarie Bank



Royal Bank of Scotland



Lancashire Group



Box of Hope



Kellett School

# How To Give

Name: \_\_\_\_\_ Mr / Mrs / Ms

Organization Name (if applicable): \_\_\_\_\_

Mailing Address: \_\_\_\_\_

Email Address: \_\_\_\_\_ Contact Number: \_\_\_\_\_

I/We would like to support the following:

**General Donation** (where most needed)       One-time       Monthly      = \_\_\_\_\_

**Transform Community** (16-week VHL, weekly food)

No. of Communities: \_\_\_\_\_ x PHP65,000 / HK\$12,000 / US\$1,500      = \_\_\_\_\_

Preferred Community Name/s: \_\_\_\_\_

**Medical Fund** (medical treatment fund)

No. of Medical Funds: \_\_\_\_\_ x PHP150,000 / HK\$30,000 / US\$3,500      = \_\_\_\_\_

**Jumpstart Learning Center** (10-month school, VHL for parents)

No. of Learning Centers: \_\_\_\_\_ x PHP262,000 / HK\$45,000 / US\$6,000      = \_\_\_\_\_

Preferred Learning Center Name/s: \_\_\_\_\_







ICM is a registered charity in the Philippines, Hong Kong and the United States.  
ICM partners with Global Development Group to process tax deductible donations in Australia and with Stewardship in the UK.

Website: [www.caremin.com](http://www.caremin.com)  
Email: [inquiries@caremin.com](mailto:inquiries@caremin.com)

Hong Kong: 21/F, Siu On Building, 243 Des Voeux Road West, Sai Ying Pun, Hong Kong (Phone: +852.3470.3009)

Philippines: PO Box 280, Araneta Center, Cubao, Quezon City 1135 (Phone: +632.470.4008)

USA: 7498 Sheridan Place, LaPlata, MD 20646

Australia: 20 Parklands Ave, Lane Cove, Sydney 2066

UK: 23 Latimer Road, Headington, Oxfordshire OX3 7PG