

International Care Ministries 2017-2018 Annual Report



International Care Ministries

Transforming the futures of the ultrapoor

This year ICM is celebrating 25 years of bringing help, hope and change to the Philippines' poorest families. With a strong commitment to our core values, we are excited to report that the positive impact of ICM's strategic *Transform* program will reach its 1,000,000th person in the coming year.

Focused

ICM commits to finding and helping those who need it most.

Effective

ICM invests in evidence-backed strategies.

Efficient

ICM stretches every dollar to achieve maximum impact.



43%

increase in self-worth



28%

decrease in serious illness



106%

increase in income



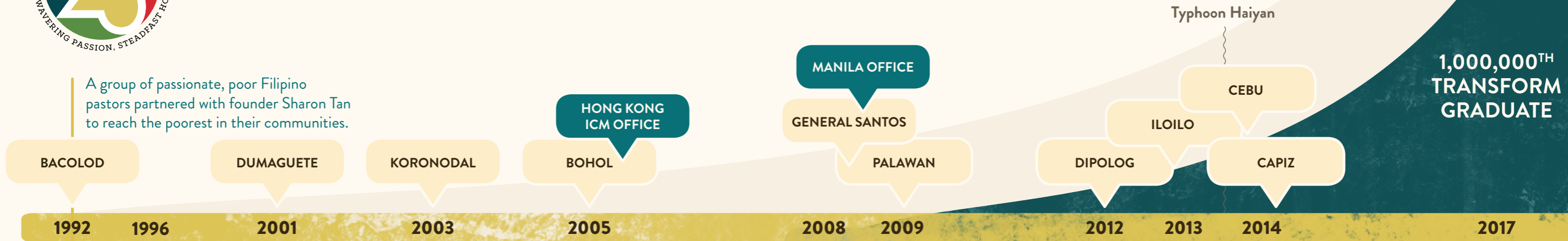
Index

ICM's Journey	04
Scalable Impact	06
Focused Impact	08
Jane's Life in Ultrapoverty	10
Strategic Impact	12
Effective Impact	14
Values	16
Health	18
Livelihood	22
Prevail Savings Network	24
Early Childhood Education	26
Thrive	28
Evidence	30
Heroes	32
Leaders	34
Financials	36
Partners	38
Feeding	40
Giving	41

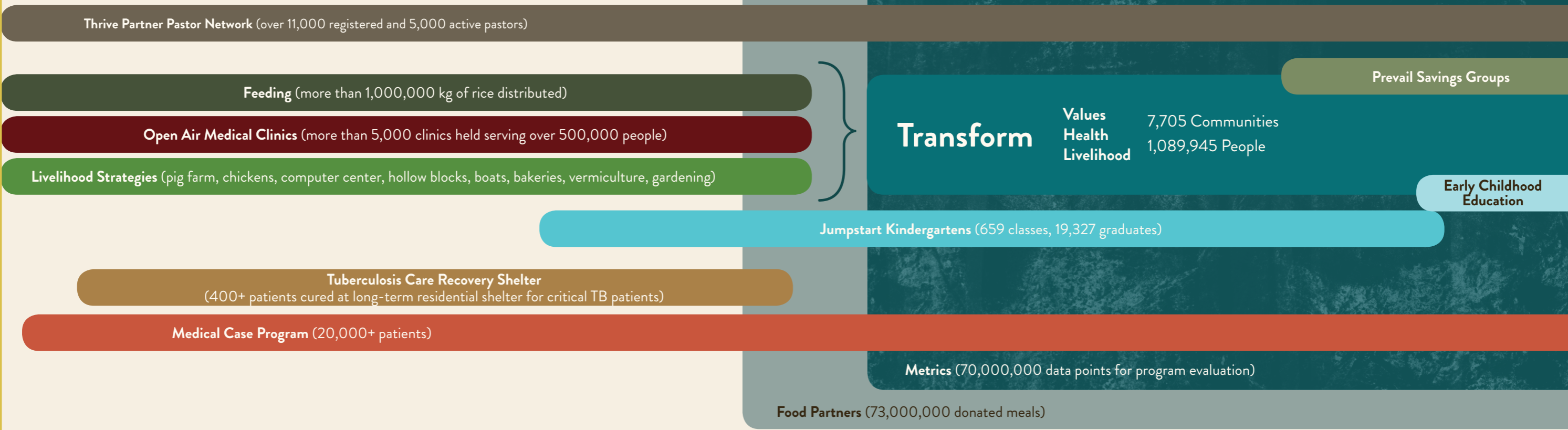


ICM's Journey 1992-2017

A group of passionate, poor Filipino pastors partnered with founder Sharon Tan to reach the poorest in their communities.



1,000,000TH
TRANSFORM
GRADUATE





Scalable Impact

The Philippines is home to more than **100 million people**.

Despite economic growth in recent years, **25 million Filipinos** still live in extreme poverty on incomes **under US\$1.25 per day**.

At the absolute bottom of the economic ladder are **seven million people** living in 'ultrapoverty' on less than **US\$0.50 per day**.

In 2017 ICM is celebrating the graduation of our one millionth Filipino from our four-month Transform program!





Focused Impact: Those Living in Ultrapoverty

What does it mean to live on less than US\$0.50 per day?

A daily struggle to meet even the most basic needs

Crowded, inadequate unsafe homes

Lack of clean water and proper sanitation

Poor health

Hunger

Malnutrition

Few networks of support

Low self-confidence

Discouragement

“Few nonprofits operate with such clarity about who their strategy is designed to help.”

—**Paul Penley**, *Excellence in Giving*

Living in ultrapoverty means living without hope.



28¢

is average daily income



32%

of mothers have had a child die



10%

are seriously ill at any time



26%

defecate outside



22%

go to bed hungry at least once a week



61%

live in cramped homes



31%

live with scrap roofs



32%

live with dirt floors



53%

don't purify their water



40%

live with no electricity

Meet Jane

12-year-old Jane is the third of five children. Her father is a fisherman, and her mother spends her days doing laundry, selling fish and caring for her children. When their village was destroyed by a typhoon a few years ago, Jane's difficult life became even harder; she lost her home, her parents lost their livelihood, and they had no idea what the future would hold.

Describing herself as shy but determined, Jane wants to be a teacher, but she doesn't know if she'll be able to finish her studies. Her days are full of the hardships of ultrapoverty; when her father goes out to sea at 4am, Jane wakes up to help her mother fetch water from the well and hand-wash their clothes. They have no running water, no toilet and no privacy. She often eats just a small amount of plain rice for her meals.





Jane's Life in Ultrapoverty

30 cents average income per person per day

400m to the water source

No savings, and owe money to several vendors

No stable income; at the mercy of seasons and weather

Cook with charcoal

No toilet

Jane's mother is Leah.

She fights every day to give her children all that they need but is unable to overcome the instability of their situation. "If we have no income from the sea, there is no way for us to provide for our children's daily needs."

For families like Jane's, every day is a battle to find enough income to meet daily needs. Mothers like Leah face impossible decisions every day, most having to sacrifice either meals or other necessities to make ends meet.

In our quest to gain a better understanding of life in ultrapoverty, we studied typical consumption habits of ultrapoor families. Our conclusion: the numbers don't add up. Families told us the amount they would spend on a good day. But most days are not "good days." And on those days, something has to give. These numbers don't include any spending on clothes, medicines, or home appliances.

Daily Expenses for a Family of Eight

Breakfast \$.89 + Lunch \$1.03 + Dinner \$1.03



Education \$.97 + Utilities \$.27 + Hygiene \$.27

Family expenses per day: \$4.46
(56c per family member per day)

Average family income per day: \$3.84
(48c per family member per day)

It doesn't add up!



Our goal for Jane's family is financial stability – helping them to make every day a "good day" – three meals a day, children in school, bills paid and money saved for the future. And how do we do it? We help Jane by supporting her primary caregiver – her mother, Leah.



Strategic Impact

ICM's Transform Program

Hope is the key. Progress out of poverty starts with the belief that change is possible.

Ultrapoor families are often isolated from the people and resources that can help them the most. Our relationships influence our identity, our decision-making, our behavior and our dreams for the future.

But new friendships alone are not enough. Poor families also lack key skills needed to cope with the hardships of life: relational skills, health knowledge and livelihood experience.

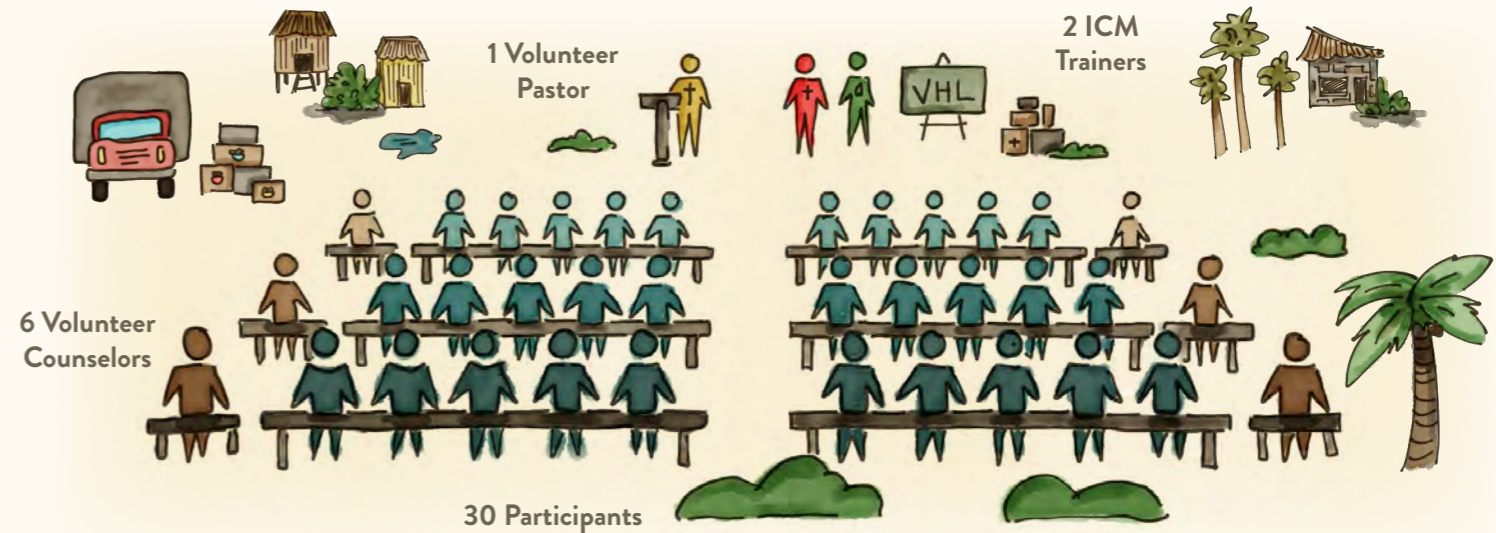
Transform creates new social networks where seeds of hope can grow. It then equips ultrapoor families with the support, training and resources needed to break the bondages of poverty.



2016–2017

155,830 Family Members
31,166 Households
974 Communities

Cost Per Transform Community
(37 households): US\$2,500



A local pastor invites 30 of the poorest families in his/her community to join *Transform*, ICM's integrated education program that builds capabilities in values, health and livelihood (VHL). Six volunteers from the community join to help lead small groups and encourage participation.

Once a week, ICM Health and Livelihood trainers join the pastor as they teach the interactive VHL curriculum. At the end of four months, the whole community enjoys deeper relationships, healthier families and greater productivity.

Values

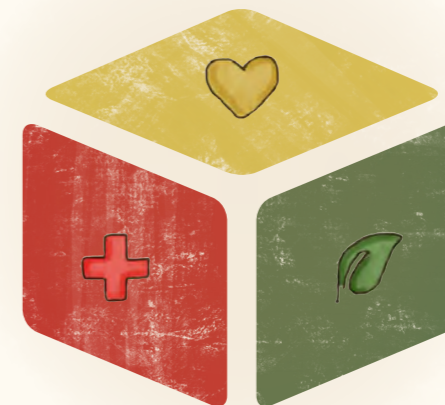
Fostering attitudes and behaviors that build strong relationships

Health

Promoting healthy life practices to increase family wellbeing

Livelihood

Empowering sustainable livelihoods and lifelong saving



Jane's family graduated from *Transform* in 2016 and continues on their new trajectory of transformation.

Started small store

Cooks and sells vegetable dishes

\$62 of savings (equivalent to 3 weeks of family's food budget)

Has a new sturdy roof

Bought two new sets of school uniforms and shoes

Invested in upgraded fishing equipment

Is using family planning methods



Effective Impact: Transformed Lives

After just four months, *Transform* participants realize their potential to reach a better future. Among ultrapoor *Transform* participants, hope is evidenced by measurable improvements in values, health and livelihood.

Values



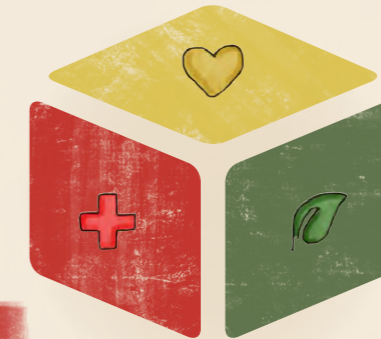
48%
increase in close friendships



41%
increase in hope



43%
increase in self-worth



+ Health



74%
increase in hygiene practices



28%
decrease in serious illness



19%
increase in food security

Livelihood



106%
increase in income



143%
increase in savers



30%
increase in savings

This effective impact will reach our 1,000,000th family member in 2017-18.

Fostering Strong Values

ICM's values curriculum helps people who have lived their whole lives in poverty to overcome feelings of inferiority and passivity that hold them back. Presented from a Biblical worldview and taught by the local partner pastor, the training leads to:

Greater respect for self and others
Stronger relationships

More confident choices
Aspirational hope for the future

The values lessons focus on three key areas:

Relationships
God, Family, Community

Personal Character
Self-worth, Integrity, Self-control

Wise Choices
Priorities, Hope, Future



Building Connectedness

Transform strengthens social networks for the poor on many levels.

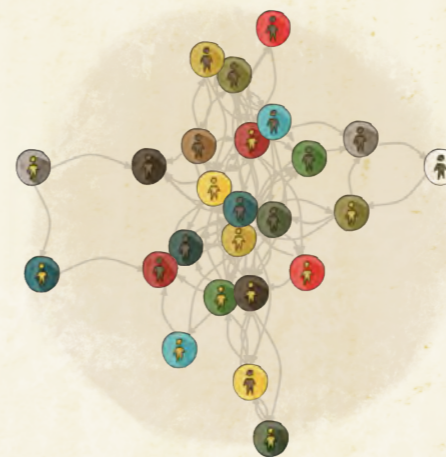
Between Community Members
Participants, local pastors, volunteers

Access to Government Services
Rural Health Units, Social Welfare Department

Legal Documentation
Civil registration for public school, health insurance

Before *Transform*, many participants report having few people with whom they could discuss personal issues. After just four months, people are connected and friendships abound.

Before Transform



After Transform





Promoting Healthy Living

Poverty increases vulnerability to health problems. One medical crisis can wipe out any progress made in the fight out of poverty.

ICM's preventive health education expands awareness of health issues leading to changes in behavior that result in improved family wellbeing.

ICM health teams also address the individual medical concerns of participants.

Common health problems are treated with Medical Treatment Packs and follow-up care.

Clinically malnourished children receive nutrition support with Home-Based Feeding.

Patients with more serious concerns access ICM's Medical Case Program where individual treatment and personalized care are available.

The health lessons focus on three key areas:

Wellness

Disease Prevention, First Aid, Nutrition

Family

Prenatal Care, Newborns, Child Development

Sanitation

Hygiene, Clean Water, Public Health

2016-2017 Medical Treatment Packs



Diarrhea

1,051 children treated

Diarrhea is the fourth leading cause of death among children under five in the Philippines.



Skin Diseases

2,800 patients treated

Dirty water, hot weather, and unclean environments can lead to skin infections and infestations.



Pregnancy and Newborns

1,962 pregnancies supported

Almost half of all under-five deaths occur in the first 28 days of life. Nearly 70% of ICM pregnancies are high risk.



Tuberculosis

1,702 people referred for more testing after screening

The Philippines is ranked ninth in the world in TB prevalence. It is the sixth leading cause of death in the country.



Juditha

Juditha watches four-year-old Diana while her parents are at work. When Diana started choking on a banana, thanks to *Transform*, Juditha knew just what to do. Suppressing her initial panic, she quickly performed the Heimlich maneuver, and out popped the banana. Diana's mom was more than grateful. "I wouldn't have known how to save her!"



AJ

Juvia joined *Transform* knowing that her son AJ wasn't getting the nutrition he needed. She just didn't know how to help him. After four months of home-based feeding for AJ and health training for Juvia, everything changed. AJ gained eight pounds, weighing a healthy 17.6 pounds at 11 months, and Juvia knows how to ensure that he continues to get the nutrition he needs to thrive.



Jomarie

By partnering with a local hospital and a medical foundation, ICM helped one-year-old Jomarie get surgery to correct his cleft lip. Jomarie's mom says, "I am so thankful that ICM has helped us.... Now that his surgery is done, even at his young age, I can see him enjoying his new look when he sees himself in the mirror."



Clarish

Clarish was born with a defect obstructing her bowels. ICM medical staff supported Clarish's family from her first emergency surgery in October 2015 until the final corrective procedure in April 2017. "I am so blessed to have been offered this great opportunity. I feel confident that Clarish will have a bright future." said her mother.



2016-17

Home-Based Feeding for Malnourished Children

- 12,244 children screened
- 13% incidence of malnutrition
- 1,043 malnourished children restored to healthy weight

Medical Case Program

- 1,894 received non-surgical assistance
- 221 life-saving surgeries provided

Medical Partner



- Supported treatment of 119 Special Medical Patients
- 375 malnourished children

Empowering Sustainable Livelihoods

Families will never get out of poverty without reliable and sufficient income.

In poor communities across the Philippines, women usually bear the primary responsibility for childcare and household chores while husbands go out to find work. ICM's livelihood training empowers women (who make up the majority of *Transform* participants) to contribute to household income by running small businesses from their homes.

ICM helps women to set achievable weekly goals as they experiment with new livelihoods at low risk. Women also learn the importance of saving for the future. As a result, ICM is seeing new entrepreneurs emerge with confidence, optimism and hope for a better future.

The livelihood lessons focus on three key areas:

Small Business Skills

Rolling Capital, Marketing, Vision

Livelihood Options

Snacks, Cleaning Products, Organic Vegetables

Savings Groups

Record Keeping, Banking, Loans



Business-in-a-Box Microloans

Inspiring New Entrepreneurs

Knowing how to run a small business is just the beginning. ICM also provides training and opportunity to try several low-capital livelihood options that can be run out of their homes right away.

These low-risk “business-in-a-box” starter kits contain all the raw materials needed to run a business for one week. As people achieve entrepreneurial success they never thought possible, confidence grows and sustainable livelihoods become a reality.

Top Business-in-a-Box Kits

Detergent Powder

Puto Cheese

Dishwashing Liquid

Banana Cake

Banana Chips



2016–2017

33,923 New Businesses

93% Repayments



Ronalyn

Ronalyn sells her snacks to employees at a nearby factory, doubling the family income.



Angelita

Angelita's kutsinta business earns enough to pay for her three children's transportation and school fees for an entire year.



Cleafe

Cleafe opened a snack stall near her children's school. Her earnings cover their monthly electricity and water bills.

Prevail Savings Network

After *Transform*, ICM continues to support newly formed savings groups with monthly “Prevail” meetings for additional training and accountability.

Savings groups provide members a secure place to save, the opportunity to borrow money on flexible terms, and basic insurance for emergencies. The 15-30 people in a self-governed group will pool their weekly deposits to provide loans to members for individual and group entrepreneurial activity. Interest paid on loans increases the loan fund, which is shared among the members at the end of a savings cycle.

Participation in savings groups contributes to:

- Strengthened financial literacy
- Improved financial capabilities
- Increased social capital

As savings groups mature, Prevail helps them to achieve even greater financial inclusion in the economic activity in their communities. Some groups register as formal cooperatives, some access government grants, some sign up for mobile money accounts, and some qualify for larger microfinance loans with other organizations.



2016-17 Prevail Savings Groups (as of May 2017)

73 Prevail Clusters	20,407 Members
1,033 Savings Groups	US\$258,920 Total Savings



Jane's New Reality: Financial Stability and Hope for the Future



Jane's mom, Leah, has been in her Prevail savings group since February 2016. The group has grown to 72 members, and their collective savings total US\$3,500. They registered as a cooperative in March 2017.



From her capital, Leah took out a loan and expanded her store. She sells snacks and cooks hot dishes at lunch time.



Jane's dad, Jessie, invested in new fishing equipment, and can now earn greater profit by catching crabs as well as fish.



The family took out a loan to build a new roof. This keeps the children safe and dry during the frequent typhoons.

Launching Confident Learners

ICM's new Early Childhood Education Strategy

Children raised in extreme poverty face overwhelming challenges that put their education and their futures at continual risk. Nearly half of poor Filipino children do not graduate from elementary school.

Parents of these children must cope with the chronic stress of providing for their families. As a result, they are often distracted from prioritizing their children's education.

In 2017-18 ICM is piloting a new early childhood education strategy that empowers mothers to become their children's first teachers. Leveraging *Transform's* existing platform, this new two-generational approach prepares pre-kindergarten age children to enter school with a strong academic foundation in math and phonics.



Jumpstart Kindergartens

From 2005 to 2017, ICM ran Jumpstart kindergartens in response to the high number of out-of-school children we encountered among the poor.

In 2013 the Philippine Department of Education (DepEd) legislated universal access to kindergarten education. To assist in this effort until universal kindergarten coverage was achieved, ICM became DepEd's first public-private partner, helping to bridge the gap in providing kindergarten access to the Philippine's most impoverished children. In 2016 access to DepEd kindergartens among the poorest Filipino children rose to 92.2%.



2005-2017 Jumpstart program

695 kindergarten classes

19,327 graduates

The 2,280 Jumpstart kindergarteners who graduated in March 2017 were ICM's final batch of graduates. We are proud to have helped the Philippines achieve its goal of universal education access.

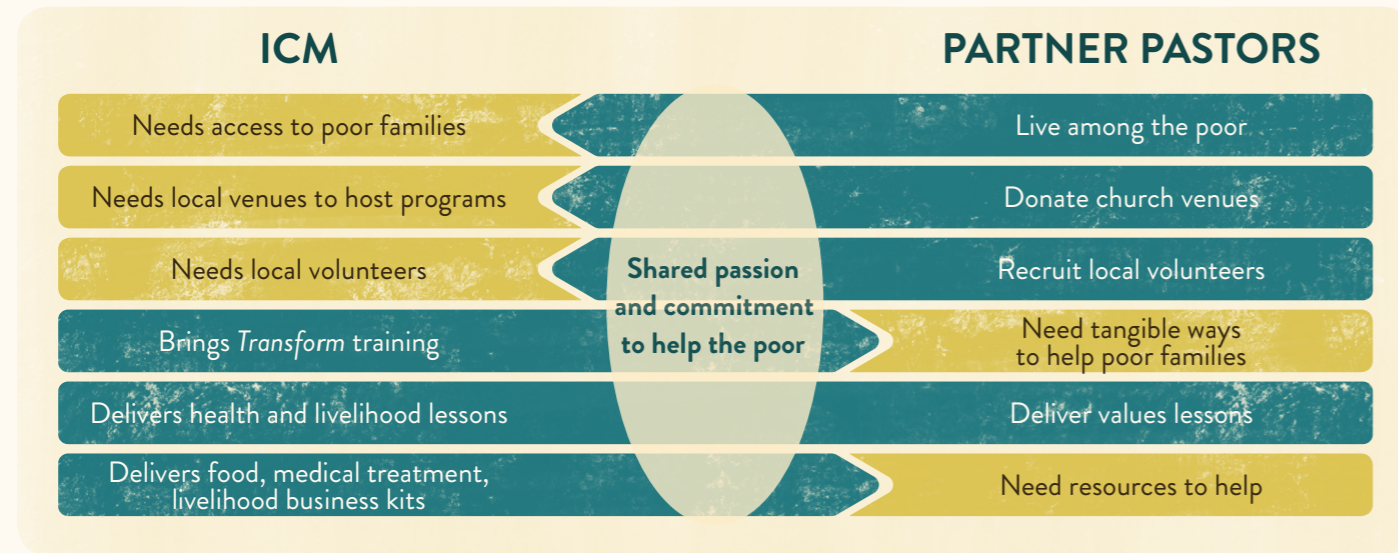


Thrive Pastor Network

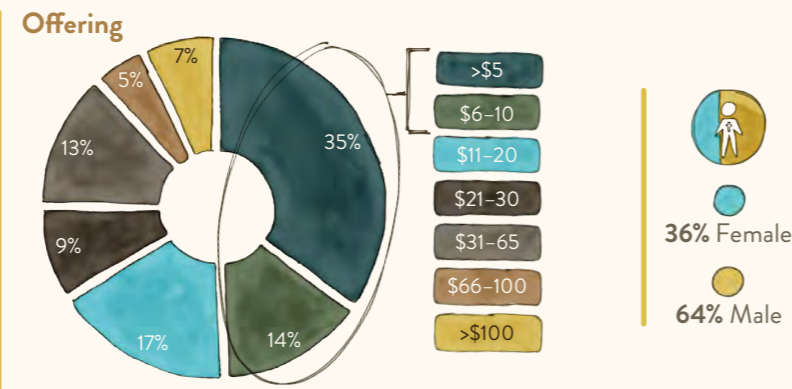
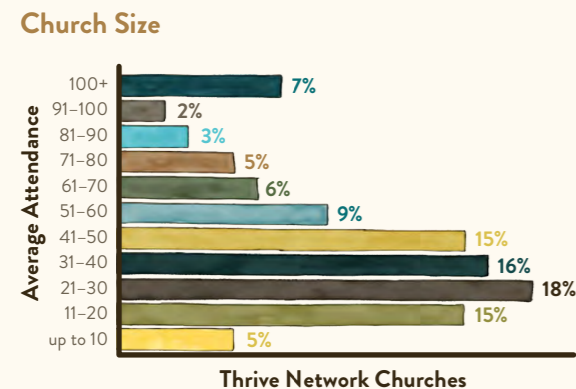
ICM's ability to reach those living in ultrapoverty is only possible through partnerships with thousands of pastors and their congregations who serve in slums and poor communities across the Philippines.

Both ICM and our partner pastors want the same thing – to help vulnerable families to break free from the bondages of poverty.

Only by working together are we able to achieve our common goal of helping the poor.



Who are our partner pastors?



Nearly 50% of ICM churches receive a weekly offering of US\$10 or less. This includes any salary for the pastor.

Second Day Training Project

ICM supports our partner pastors with monthly training that helps them and their churches to thrive. This training includes peer mentoring, small group strategies, Bible study, fellowship and prayer.

In June 2016, in response to requests for deeper ministry training, the Second Day Theological Training Project was launched. ICM is partnering with six respected seminary training organizations to deliver two-year ministry training courses designed to build healthy pastors, healthy churches and healthy communities.



86 Thrive Districts

7,303 Member Pastors in Thrive Network

Training Partners



“The church is a network that links people in every country, every social or ethnic group, and every economic strata together....I could take you to millions of villages around the world where the only civil institution that exists there is a local church. They have no school, no clinic, no post office, no store – but they have a church! In many nations, outside of the capital, the only service organization you can find anywhere is a church.”

–Rick Warren, Saddleback Church



Evidence

Commitment to effectiveness means dedication to data.

Monitoring

ICM tracks everything that happens on the ground.

ICM's 400+ staff members record the details of program implementation including lessons taught, food distributed, medicines dispersed and homes visited.

The engagement and progress of 35,000+ participants is documented including attendance, weight changes of children, loans accepted and repaid, and accumulated savings.

Evaluation

Monitoring isn't enough. Our objective is impact.

Independent contractors have conducted over 200,000 pre- and post-program participant surveys since 2009.

Additional randomized controlled trials compare program impact against control groups.

Research

We can always do better tomorrow than we did yesterday.

ICM's internal database integrates monitoring statistics, evaluation data and community demographics.

By understanding the causes of positive outcomes we can shape strategies for the highest impact.



70,000,000+
Data Points

"ICM's dedication to evidence and transparency means that their work is not just helping the direct recipients in their programs, but ultrapoor people in other parts of the Philippines, other parts of Asia, and other parts of the world."

—*Dean Karlan, Professor of Economics and Finance, Kellogg School of Management, Northwestern University and Co-founder of Innovations for Poverty Action*

ICM is honored to partner with outstanding academic institutions who are committed to excellence in research.








Heroes: Philippine Field Staff

The work of ICM is made possible by our team of 477 Filipinos serving 23 provinces from 10 bases of operation in the Visayas and Mindanao.








Leaders









Global Team

				
David Sutherland Global Chief Executive Officer	Beth Uy Global Chief of Staff	Deanna Sutherland Executive Director Hong Kong	David Dickhudt Global Chief Financial Officer	Lincoln Lau Director of Research

Philippine Management Team

				
Milton Amayun President	Daniel Mayhugh Chief Operations Officer	Daniel Bouw Chief Financial Officer	Carol Roa Chief Advancement Officer	Herman Moldez Chief Spiritual Officer

Regional Leaders

									
Minierva Lahaylahay Bohol	Hernan Araguas Capiz	Primo Sistual Cebu	Marites Petallar General Santos	Samuel Templado Iloilo	Edwin Booc Koronadal	Danilo Mijares Negros Occidental	Jonathan Sanchez Palawan	Lilian Bardinas Negros Oriental	Faiola Besana Zamboanga Del Norte

International Board of Directors

			
David Sutherland Chair of ICM Board Former CFO, Morgan Stanley Asia	Andrew Ostrognai Vice Chair of ICM Board Managing Partner, Debevoise & Plimpton, LLP	Charles Caldwell Director Human Resources, English Schools Foundation - HK	Dennis Monticello Director Executive VP and Head of Corporate Client Segment Group of the BPI
			
Lily Ng Director StoVoKor Inc.	David Simms Director Former President of Opportunity International USA	Randy Wilcox Director Former President of the Americas, Otis Elevator Company	Malcolm Wood Director Chief Investment Officer, Baillieu Holst

Board of Advisors

ICM benefits from the generous counsel of a wide range of professionals. ICM's Board of Advisors are committed to assisting ICM with their wisdom, experience and due diligence.

Hong Kong

Greg Anderson
Nick & Terri Appel
Michael & Entela Benz
Stephen & Pam Birkett
Michael & Anne Sawyer Birley
Augie Cheh & Maya Furumoto
Tim & Carrie Chen
Mario & Christine Damo
Colin Farrell
Lyn & Teresa Fox

Marc & Nadia Geary
Johanna Chua
Ronna Chao
Dennis & Guangjie Hopton
Nicholas & Weng-Yee Kee
Hubert Lem
David & Jeannie Liao
Tess Lyons
Julian & Pauline Marland
Ramon & Vicki Maronilla
Nick & Jaclyn Norris

Michael & Patricia Openshaw
Carmen Schiffmann
Mike & Ting Small
Homer Sun & Min-yee Teh
Judy Vas
Latitia Yu

Sydney

Keith & Coralie Crews
Rae Doek
Russell & Li Li Fisher

Nick Foord
Don & Louise Hayman
Andrew & Nicole McPherson
Daniel & Ruth Spiritosanto
Verity Thomson
Kara Wood

Manila

Gina Aboitez
Daphne Kuok
Aissa Montecillo

John Nicholls
Joel & Stella Schapero
Noel & Marilyn Tan

United Kingdom

Charles Mathias
Grayden Reece-Smith
Bridget Salmon
Julie Turner

2016–2017 Actual Financial Results

Year ending May 31, 2017 (in '000s)

Program	Philippine Peso PHP	HK Dollars HK\$	US Dollars US\$	%
Transform (Community Training)	279,370	43,887	5,663	62%
Feeding	171,849	27,740	3,579	
Values, Health, Livelihood	98,597	15,916	2,054	
Medical Treatment Packages	1,429	231	30	
Prevail (Savings Groups)	12,312	1,987	256	3%
Education	33,473	5,403	697	7%
Kindergartens	24,663	3,981	514	
Early Childhood Program	8,810	1,422	183	
Thrive Network (Pastor Training)	69,094	11,153	1,439	16%
Other Services (Health, Disaster, Capital)	27,828	4,492	580	6%
Support	26,081	4,210	543	6%
Total Budget	440,663	71,132	9,178	100%

In 2009-10 ICM reached 50,000 people, increasing to 162,000 people in 2016-17, a 224% increase compared with our impact eight years ago.

In 2016-17, ICM's budget was US\$9.8M and our actual expenses were US\$9.2M. This 6% decrease was due primarily to the currency impact of the weaker Philippine peso, offset partially by increased food distribution for pregnant mothers, malnourished children and disaster relief.

These pages consolidate the results of two ICM Philippine charities (ICM Foundation Inc. and ICM Manila Inc.) as well as certain costs incurred overseas which relate directly to Philippine operations. These pages exclude other costs from Hong Kong and the USA. Non-Philippine costs are supported by designated donations (including Banquet tables and tangible auction items, donations from the Board of Directors, a grant from a US foundation and Springboard donations), allowing virtually all other donations to go straight to the Philippines.

2017–2018 Budget

Year ending May 31, 2018 (in '000s)

Program	Philippine Peso PHP	HK Dollars HK\$	US Dollars US\$	%
Transform (Community Training)	279,371	45,798	5,909	69%
Feeding	178,647	29,286	3,779	
Values, Health, Livelihood	97,878	16,046	2,070	
Medical Treatment Packages	2,845	466	60	
Prevail (Savings Groups)	19,076	3,127	404	4%
Education	20,633	3,382	436	5%
Early Childhood Program	20,633	3,382	436	
Thrive Network (Pastor Training)	48,219	7,905	1,020	12%
Other Services (Health, Disaster, Capital)	20,690	3,392	438	5%
Support	19,689	3,228	416	5%
Total Budget	407,677	66,832	8,623	100%

In 2017-18, ICM's budget is US\$8.6M, down about 6% from the previous year, due primarily to innovations to deliver programs more efficiently and a restructuring of the Education program due to changes in Philippine government policy.

The value of donated food distributed in 2016-17 was US\$4.0M and ICM expects to distribute food valued at US\$3.8M in 2017-18. ICM expects to reach 183,000 people in 2017-18 while reducing its program support expense to 5% of overall expenses.

ICM's financial statements in the Philippines are audited by SGV & Co, the largest accounting firm in the Philippines, an affiliate of Ernst & Young LLP. All of ICM's audited financial statements from the Philippines, Hong Kong and the USA are available on our website. ICM's books are open to our donors. Any questions about our finances? Just ask.

Partner Profile

While Hong Kong individuals and foundations remain the primary donor demographic, support from US foundations as well as Philippine individuals and corporations continues to grow. Support from individuals in the US is consistent, as is support from Australia and the UK. ICM is diversifying its donor base through new partnerships with international foundations.

In-Kind Partners

An important aspect of ICM's work is our ability to provide people living in poverty with nutritional food and other essential resources. This is possible due to our partnerships with other nonprofit organizations that share our values and vision. In 2016-17, we distributed 61 containers with 2.8 million packages of fortified food representing 17 million nutritious meals for the poor. We also received 150,000 bars of soap from Soap Cycling.



Cash Donation by Country



Cash Donation by Source



Partners



Project CHIC

(Capacity-building for Humanitarian Initiatives in Capiz)

In July 2016, the Financial Enablers Project, as part of the Disaster Emergency and Preparedness Programme (DEPP) of Start Network funded by UKAID (formerly DFID), awarded a consortium grant to ICM together with Philippine Relief and Development Services (PhilRADS) and Peacebuilders Community, Inc. (PBCI). The grant supports capacity development initiatives of ICM, PhilRADS and PBCI to enable local faith-based groups to provide rapid, compassionate, and culturally appropriate response in times of disaster using indigenous strategies, people and resources. Start Network is a consortium of 29 INGOs, mostly based in the UK, engaged in humanitarian work. Consortium members who are directly managing the Financial Enablers Project are Oxfam GB (lead), Christian Aid and Tearfund.

Feeding the Hungry

In 2016-17, ICM distributed over 61 forty-foot containers of food (almost 17 million meals) to ultrapoor families to help them provide better nutrition for their children. The highly nutritious food, specifically designed for malnourished individuals, is donated by four nonprofits: Feed My Starving Children, Rise Against Hunger, Kids Against Hunger, and Harvest Pack.



Kids Against Hunger



While all the food is donated, ICM incurs the cost of international shipping, customs fees, logistics, and food storage as well as the land delivery costs to the geographically isolated and disadvantaged communities served. **Philippine Span Asia Carrier Corporation** partners with ICM by donating free domestic shipping within the Philippines.

More than 100,000 hungry children are fed each year through a range of nutritional interventions.

- Home-based feeding for those suffering from malnutrition
- Medical Case Program nutrition support
- Pregnancy & newborn nutrition support
- Disaster response food packages
- Nutrition for families in holistic community-based skills training



2017-18 Budget

- 16 million meals to be distributed worth US\$3.8M
- Transportation costs to be incurred by ICM: US\$0.6M
- Every US\$1 donated to feeding the hungry = US\$7 worth of food (29 meals) delivered

Giving Form

Please visit www.caremin.com to donate online.

Name: Mr / Ms _____ Organization (if applicable): _____
 Email: _____ I would **not** like to receive emails from ICM
 Mailing Address: _____ Contact Phone Number: _____

- Transform**
 Values, Health and Livelihood training for 37 families plus nutrition support, medical treatment packs and other livelihood resources
 HKD 20,000 USD 2,500
 Monthly x 12 = HKD 1,650 / USD 200
- Medical Treatment Packs**
 Provide food & care kits for two pregnant mothers HKD 1,200 USD 150
 Treat 5 children for diarrhea HKD 800 USD 100
- Feed the Hungry**
 Deliver 270,000 meals worth US\$73,000 HKD 73,000 USD 9,400
 Treat a malnourished child HKD 1,800 USD 230
- Empower Savings Group Entrepreneurs**
 Support 500 Entrepreneurs HKD 33,000 USD 4,200
 Provide Business-in-a-Box kits for 35 Entrepreneurs HKD 850 USD 110
- Save Lives through Medical Mercy**
 Provide treatment for serious surgical cases HKD 40,000 USD 5,000
 Provide treatment for 5 non-surgical cases HKD 1,320 USD 165
- Support Pastors**
 Strengthen 50 pastors with monthly ministry training HKD 72,000 USD 9,300
- Where Most Needed**
 One Time: HK\$/US\$ _____
 Monthly: HK\$/US\$ _____

Giving Form

Total Amount: \$ _____

I would like to pay by:

Cash **Bank Transfer** (Please email give@caremin.com for bank details/autopay form)

Check Check Number: _____ Bank: _____

Hong Kong Residents: "International Care Ministries, Ltd." (HK tax receipts) or
"Friends of Hong Kong Charities, Inc." (HK and US tax receipts, HK\$ or US\$ amounts)

USA Residents: "International Care Ministries"

Philippines Residents: "International Care Ministries Foundation, Inc."

Credit Card **Online** (www.caremin.com/donate)

Card Type: Visa MasterCard American Express *Note: ICM is charged 3% to process credit cards.* Yes
Would you like to add this fee to your donation? No

Credit Card Number: _____ Expiry Date: _____ Validation Code: _____

Name on Card: _____

Complete Billing Address: _____

Cardholder's Signature: _____

Stock/Mutual Fund (Please email give@caremin.com for stock/mutual gift instructions. US tax receipt only)

My Company Will Match my Gift

Company Name: _____ Matching form is attached I will submit matching form online

The above information may be emailed to give@caremin.com or sent to any of the addresses below.

Philippines: ICM, Antel Global Corporate Center, Unit 3203, Julia Vargas Avenue, Pasig City, Metro Manila

Hong Kong: ICM, GPO Box 2089, Central

Australia: ICM, 20 Parklands Ave, Lane Cove, Sydney 2066

USA: ICM, PO Box 2146, La Plata, MD 20646

UK: ICM, 23 Latimer Rd, Headington, Oxfordshire, OX3 7PG

ICM partners with Opportunity International in Australia, Stewardship in the UK and TGCF in Canada to process tax-deductible donations in these locations. Please visit www.caremin.com/donate for more information.

ICM, My Charity



"It has been exciting over the years to observe first-hand how ICM mobilizes each community with its Transform program and does so in a cost-effective manner via the Thrive Network of local pastors in those communities."

—**Dennis Hopton**, *GTA Asia*, & **Guangjie Hopton**,
Assistant General Counsel of Alibaba Group



"We were fascinated from the very beginning by the highest level of transparency, commitment and professionalism of everyone, staff and volunteers, at ICM. It really impressed us the standards of accountability and follow-up of all the projects undertaken by ICM. All things said, alongside a true love for helping others is just the perfect combo for helping those in most need in the Philippines."

—**Jose Maria San Roman**, *Managing Director,*
Logistics and Forwarding Industry



Charity listed on
WiseGiving
惠施·慈善機構

ICM contributes toward the achievement of the Sustainable Development Goals including:



ICM is a registered charity in the Philippines, Hong Kong and the United States.

ICM partners with Opportunity International in Australia, with Stewardship in the UK, and with TGCF in Canada.



Philippines: Unit 3203, Antel Global Corporate Center,
Julia Vargas Avenue, Pasig City, Metro Manila (Phone: +632-571-6975)

Hong Kong: 21/F, Siu On Building, 243 Des Voeux Road West
Sai Ying Pun, Hong Kong (Phone: +852-3470-3009)



caremin.com



facebook.com/internationalcareministries



info@caremin.com



[@ICMnews](https://twitter.com/ICMnews)



[IntlCareMinistries](https://www.instagram.com/IntlCareMinistries)



caremin.com/blog



vimeo.com/intlcareministries

