



International Care Ministries
2021-2022 ANNUAL REPORT

International Care Ministries

HOPE THAT TRANSFORMS

Combining a heart of compassion with a business mindset, ICM delivers holistic change to those living in ultra-poverty.

ICM's impact is focused, effective, efficient, and scalable.

FOCUSED. ICM helps those who need it most.

EFFECTIVE. ICM invests in evidence-based strategies.

EFFICIENT. ICM achieves maximum impact at minimal cost.

SCALABLE. ICM replicates results at scale.

NOTE: All photographs were taken in accordance with current COVID-19 health protocols or prior to the pandemic.



It all starts with hope.

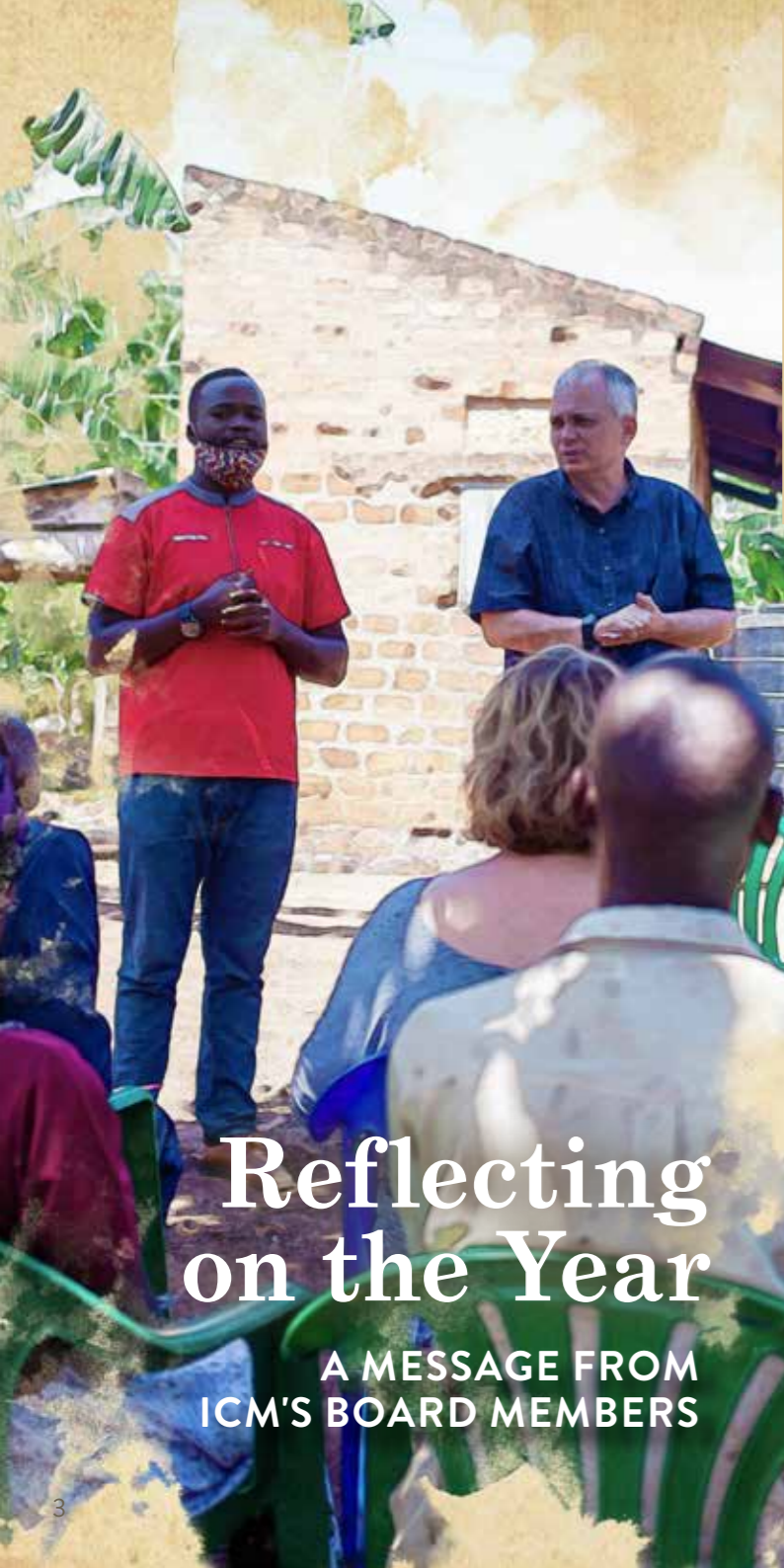
Progress out of poverty begins with the belief that a better future is possible. **Transform** is ICM's immersive learning experience that ignites hope and propels change at scale.

1.4 million people have graduated from ICM's Transform program since 2009.



Contents

3	Board Message
5	ICM's Focus
7	Strategy for Change
9	Hope at Scale
11	Transform
13	HOPE Heart
15	HOPE Opportunity
17	HOPE Physical
19	HOPE Education
21	Medical Mercy
23	Partner Pastors
25	COVID-19 Response
27	Research
29	Wider Impact
31	Management Team
33	Financials
35	Partners
37	Board of Advisors



Reflecting on the Year

A MESSAGE FROM ICM'S BOARD MEMBERS

Strength

Amidst a year of global uncertainty and fear, ICM has emerged stronger than ever before, addressing need, deepening impact, and improving sustainability.



David Sutherland
Chair of ICM Board, CEO
*Former CFO,
Morgan Stanley Asia*

Need

Need has been unprecedented, especially for those living in ultra-poverty. Fear and hunger have caused haunting suffering for so many vulnerable families.



Andrew Ostrognai
Vice Chair of ICM Board
*Of Counsel,
Debevoise & Plimpton, LLP*

Challenge

Our team has heroically risen to the challenge, going above and beyond day after day to serve those who need help the most.



Charles Caldwell
Director
*Human Resources,
English Schools Foundation - HK*

Adaptability

With adaptability in its DNA, ICM turned each hurdle into an opportunity for learning and growth.



Guangjie Hopton
Director
*Consultant,
Alibaba Group*

Impact

In partnership with our amazing partner pastors who serve across the country, ICM delivered food, resources, and hope to over five million people!



Dennis Montecillo
Director
*Former Executive VP and
Head of Corporate Client
Segment Group of the BPI*

Compassion

ICM's heart of compassion shone through, as team-members listened and responded to the individual needs of thousands of families in crisis.



Pamela Hsu Phua
Chief Executive Officer Asia
VP Bank

Innovation

This year required ICM to rethink everything we do, resulting in new alumni strategies and longer-focused program elements that improve sustainability.



David Simms
Director
*Managing Partner and
Founder, Talanton*

Expansion

In the middle of a global pandemic, ICM expanded into more communities within the Philippines and internationally into Uganda and Guatemala.



Randy Wilcox
Director
*Former President of the Americas,
Otis Elevator Company*

Efficiency

Through a commitment to the bottom line and partnerships with local pastors, volunteers, and local governments, the cost per participant stayed low.



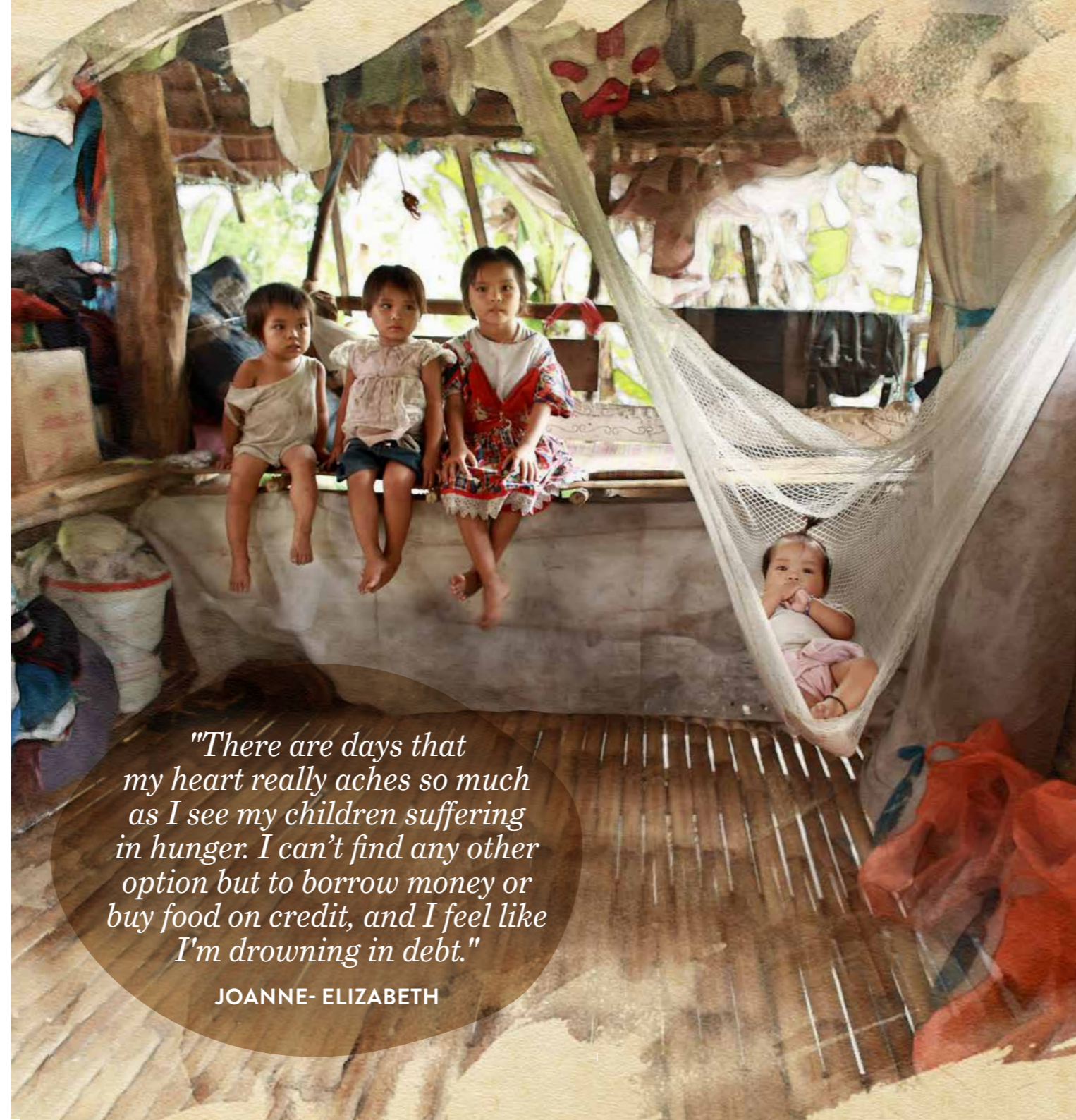
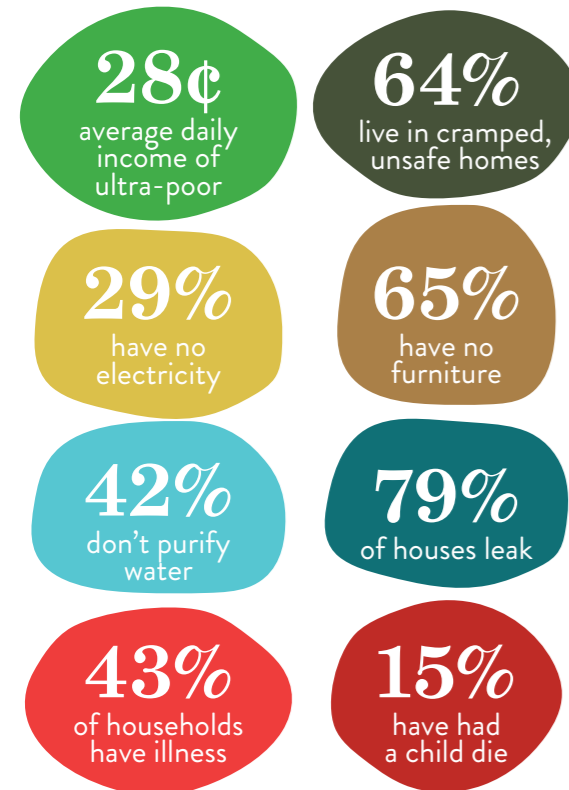
Malcolm Wood
Director
*Head of Institutional Research &
Asset Allocation, Ord Minnett*

ICM's Focus

THOSE LIVING IN ULTRA-POVERTY

Almost a quarter of the Philippines' 109 million people live below the national poverty line. ICM focuses its anti-poverty efforts on the most vulnerable—the seven million Filipinos living in ultra-poverty.

With incomes of less than US\$0.50 per person per day, ultra-poor families face the toughest barriers to progress out of poverty. Most lack job skills and productive assets. Many live in areas that are difficult to reach.

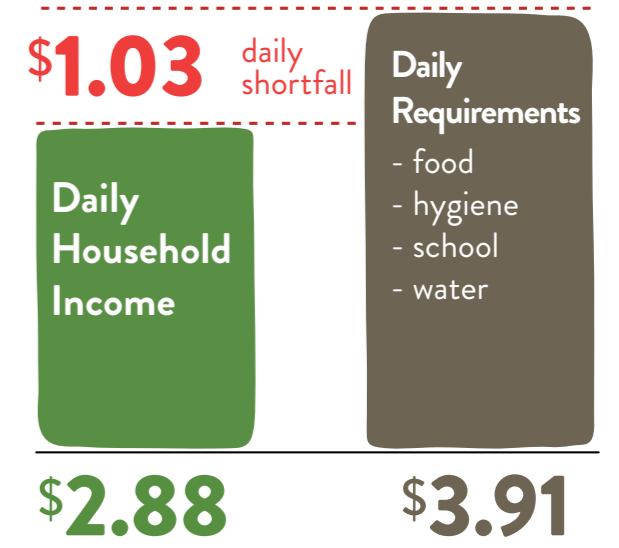


"There are days that my heart really aches so much as I see my children suffering in hunger. I can't find any other option but to borrow money or buy food on credit, and I feel like I'm drowning in debt."

JOANNE- ELIZABETH

The Economic Reality of Ultra-Poverty

Daily income and expenses in US\$ as reported by a family of six living in ultra-poverty in Bacolod City, Philippines:



The Emotional Toll of Ultra-Poverty



Change must start with hope that a better future is possible.

ICM's mission is to bring real hope that leads to real change.

ICM's Strategy for Change

Partner Pastor Network

ICM's work starts with pastors who serve the poor.

These local leaders are the backbone of ICM's ability to reach the poor at scale.

Transform

Four-month weekly program that builds capacity for real change in ultra-poor families.



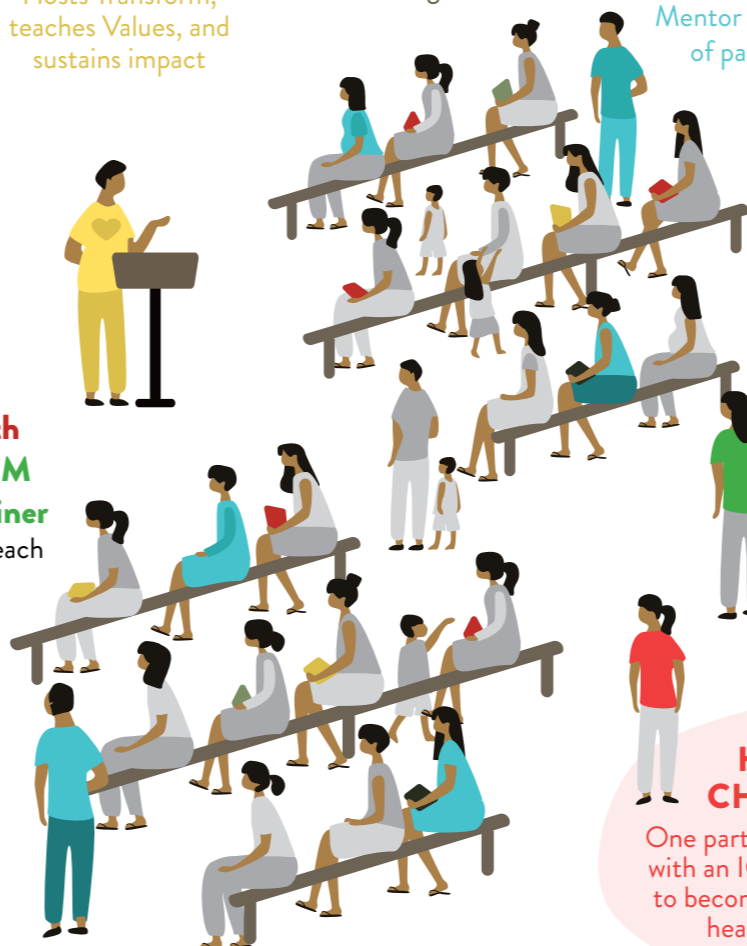
1 ICM Health Trainer + 1 ICM Livelihood Trainer
Visit weekly to teach new life skills

Transform brings **HOPE** that leads to change for families in ultra-poverty.

1 Volunteer Partner Pastor
Hosts Transform, teaches Values, and sustains impact

30 Participants
Learn, engage, and grow

6 Volunteer Counselors
Mentor small groups of participants



SAVINGS GROUP LEADER
One participant is elected to oversee the savings group.

HEALTH CHAMPION
One participant apprentices with an ICM Health Trainer to become the community health champion.

Sustainability

ICM sustains progress out of poverty by monthly investment in community leaders identified during Transform.

THRIVE empowers local partner pastors to become agents of change in their communities.

15,823
active pastors

PREVAIL equips savings group leaders with skills to mature their groups for continued success.

2,431
active savings groups

FLOURISH trains community health champions to promote family health and well-being in their communities.

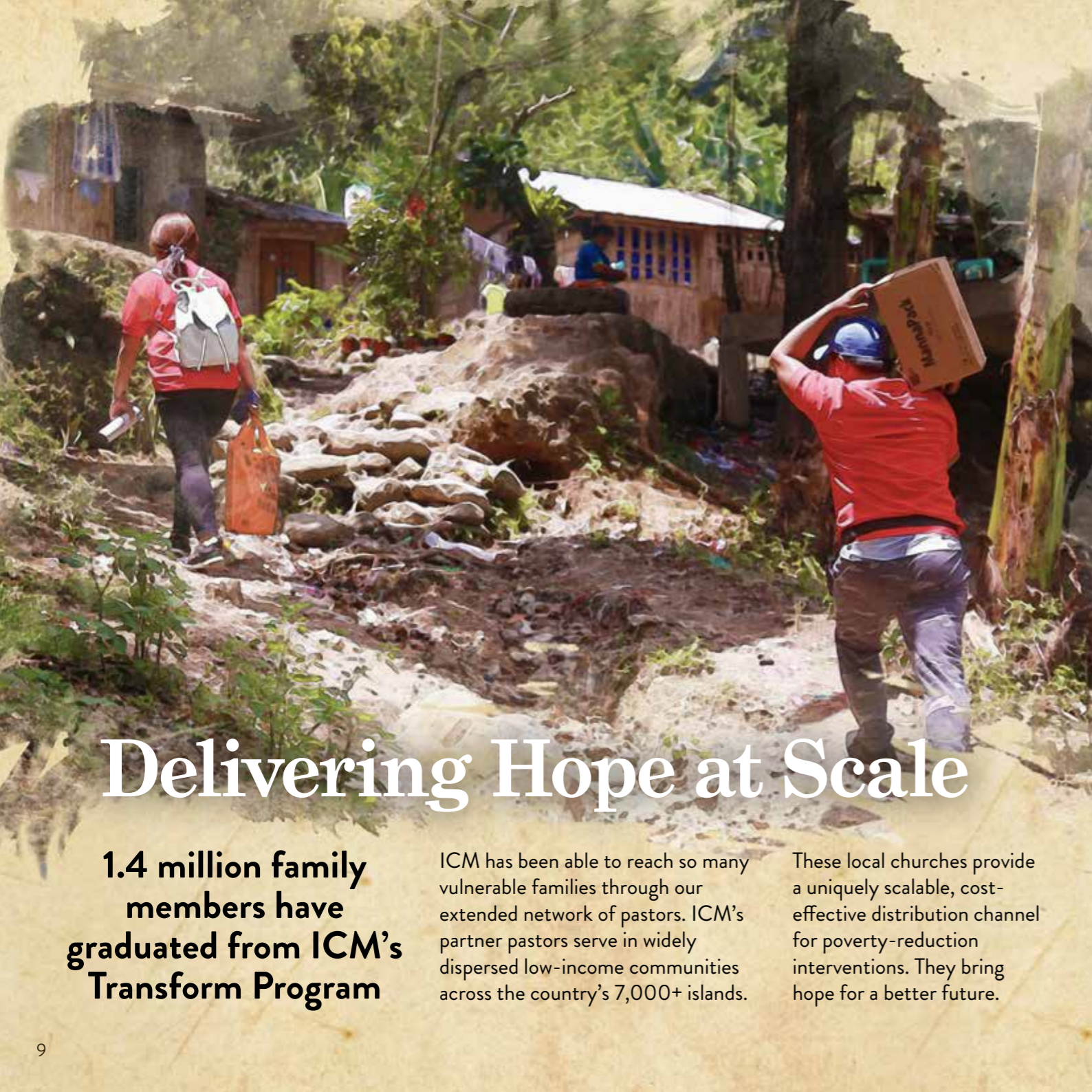
1,269
active health champions

Total Impact since 2009

9,788
Transform communities

255,618
households enrolled

1,369,822
family members empowered



Delivering Hope at Scale

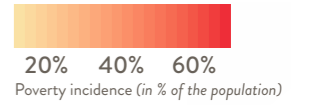
1.4 million family members have graduated from ICM's Transform Program

ICM has been able to reach so many vulnerable families through our extended network of pastors. ICM's partner pastors serve in widely dispersed low-income communities across the country's 7,000+ islands.

These local churches provide a uniquely scalable, cost-effective distribution channel for poverty-reduction interventions. They bring hope for a better future.

Philippine Area Heads

ICM Manila Office



1 PALAWAN

ERCILE TRESPUENTES

2 KALIBO

LILIAN BARDINAS

3 ILOILO

STEFANY LEE

4 BACOLOD

SAMUEL TEMPLADO

5 DUMAGUETE

PRECYLLYN CASTRO

6 CEBU

PRIMO SISTUAL

7 BOHOL

MINIERVA LAHAYLAHAY

8 TACLOBAN

EDWIN BOOC

9 DIPOLOG

FAIOLA BESAÑA

12 DAVAO

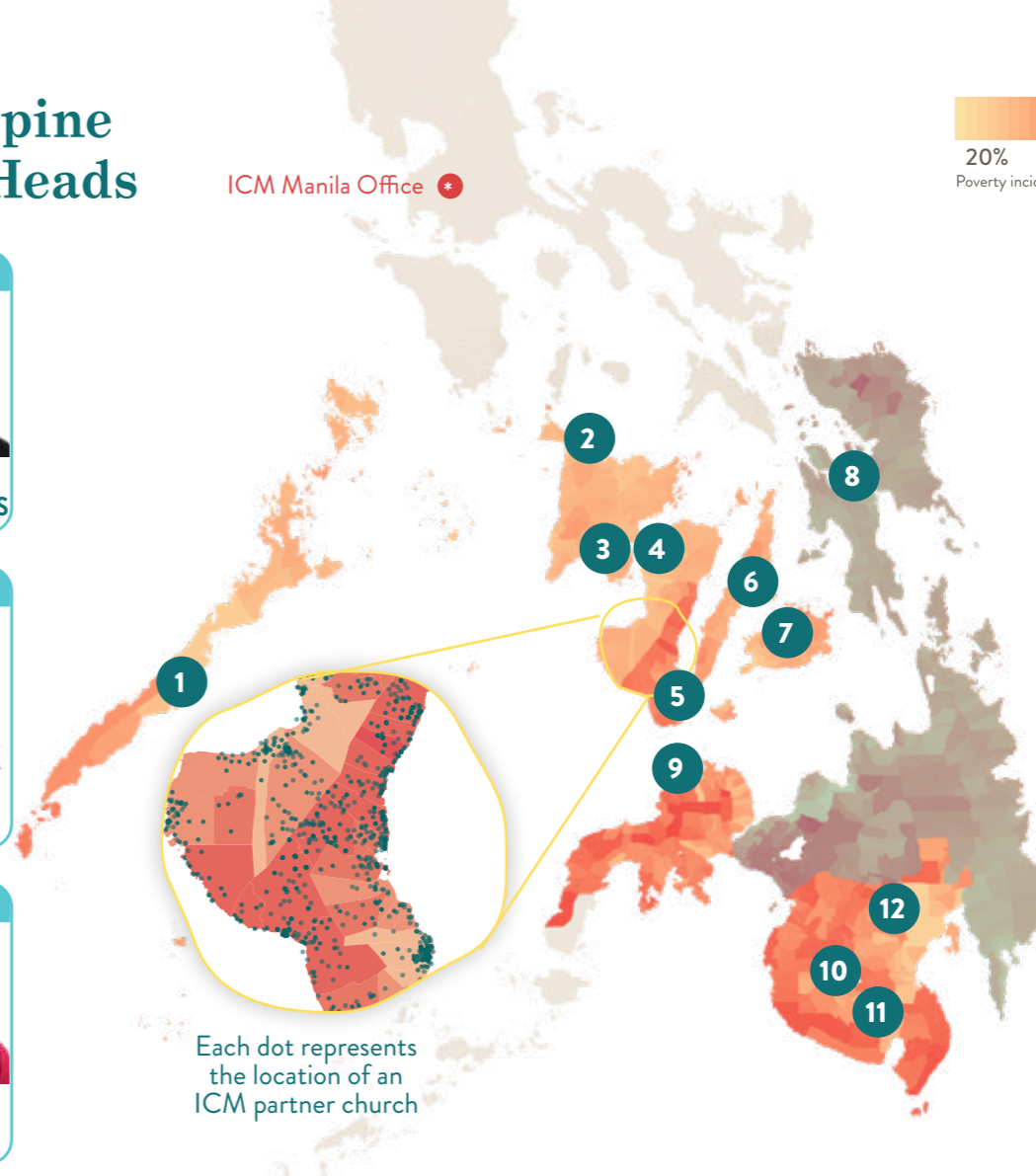
ROCEL ALONZO

11 GENERAL SANTOS

MARITES PETALLAR

10 KORONADAL

JASHER GASATAYA



Each dot represents the location of an ICM partner church

"I'm so happy! I feel like I went back to school! I learned a lot from the trainers and I learned new skills which have given my family extra income. My friends said they see I'm blossoming since I joined Transform."

MARIA CHONA

HOPE Shines Through

Progress out of poverty starts with the belief that change is possible.

16%

increase in family life satisfaction

25%

increase in social safety net

107%

increase in income among ultra-poor

87%

increase in savers

36%

reduction in illness

19%

increase in water purification

74%

of children improve in math

81%

of children improve in phonics

ICM's Transform Program

What is it?

A holistic education course delivering support, training, and resources that ignite hope to propel change for those living in ultra-poverty.

How does it work?

A local pastor uses a poverty scorecard to identify the most vulnerable families from the community. Weekly for four months, ICM Transform trainers join the pastor and community volunteers to teach the interactive curriculum.

What does it teach? The multi-faceted training focuses on four essential areas for HOPE to grow.

Opportunity

empowering income generation and savings

Heart

fostering positive values for strong character



Physical

promoting healthy living for greater family well-being

Education

launching confident young learners ready for school

What is the result?


- Hope shines through; small changes add up to lasting change.
- Participants realize their potential to reach a better future.
- ICM's research shows concrete evidence of improvements in many areas of participants' lives.


Hope Starts with the Heart


FOSTERING POSITIVE VALUES


Hope is a powerful motivating force that is essential for well-being. ICM's Transform curriculum starts by helping people visualize a better future for themselves. Next, it helps them define a path to get there, building confidence and courage along the way. Soon, people realize they can be changemakers in their own lives. Hope makes a way for people to get out of poverty.

Pre- and post-surveys of Transform participants show statistically significant improvements in virtually every measure of hope.

 How happy are you today?

 I have specific goals and plans for my livelihood.

 How hopeful are you about the future?

 People like me can help bring positive change.

Values Curriculum

HEALTHY RELATIONSHIPS

God
Family
Community

PERSONAL CHARACTER

Self-worth
Integrity
Self-control

WISE CHOICES

Priorities
Future
Resilience

Empowering Women

One of the best ways to promote economic growth among the poor is to empower vulnerable women for greater productivity. ICM's Transform program does this by:

- creating safe support networks for women
- inspiring entrepreneurship among women
- improving the standing of women in their communities
- providing new leadership roles for women
- addressing health issues of women and children



88%
of Transform
participants
are women



Hope Sustained COMMUNITIES OF HOPE



BEFORE TRANSFORM
individuals are loosely connected and many are isolated.

By sharing goals and cheering each other toward success, new friendships form as people gather each week for Transform. These new relationships become communities of hope that influence self-identity, aspirations, decision-making, and behavior change long after Transform ends.

New relationships are sustained through local church gatherings, ongoing savings group meetings, and visits from community health champions. Relationships bolster hope as people continue on their pathways out of poverty.



AFTER TRANSFORM
a safety net of social adhesiveness is formed.

Hope Grows with Opportunity

EMPOWERING SUSTAINABLE INCOME

More than just surviving the immediate needs of today, those in ultra-poverty need the tools to provide for their families tomorrow.

And that requires sustainable income. ICM's livelihood curriculum provides the training, the resources, and the support necessary for families to start new businesses, save earnings, and invest in their futures.



Earn

Women learn how to run low-capital, low-risk, home-based businesses.



Save

A portion of new income is saved in new, self-governed savings groups.



Invest

As savings grow and trust develops, new group businesses are launched.

Livelihood Curriculum

SMALL BUSINESS SKILLS
 Planning
 Budgeting
 Marketing

SAVINGS GROUPS
 Governance
 Record Keeping
 Group Businesses

BUSINESS OPPORTUNITIES
 Snack Production
 Cleaning Products
 Organic Vegetables

214,659
 small business kits distributed

2,431
 active savings group

Total impact 2014 - 2021



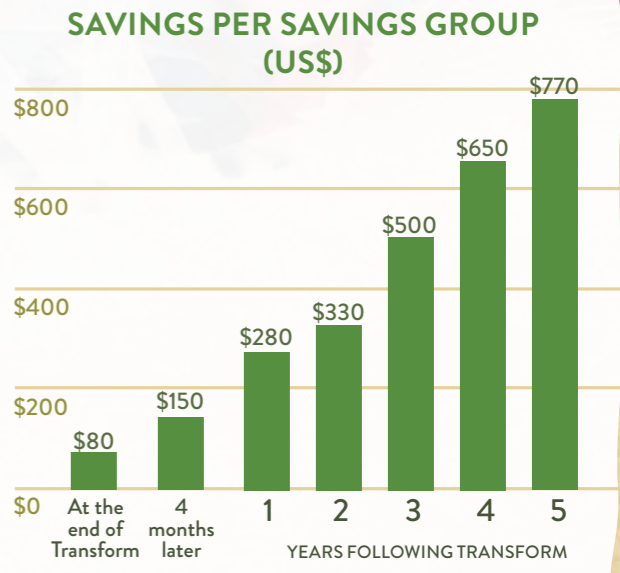
"Wow, my hope came alive! I was inspired to start a business. It makes me so proud that I can now help my family to earn, and I am able to provide for our food expenses."

LENDY

Sustaining Opportunity's Impact PREVAIL

After Transform, ICM sustains progress made through Prevail, a monthly support group for Transform savings group leaders. Prevail sustains successes in livelihood, deepens financial inclusion, and continues community-led enterprise.


- Prevail promotes** best practices for savings groups.
- Prevail positions** groups for success as they mature with opportunities for group businesses.
- Prevail prepares** leaders with problem-solving, income generation strategies, and accountability.



Hope Endures in the Physical


PROMOTING HEALTHY LIVING

Poor health is both caused by poverty and contributes to poverty. ICM addresses health challenges of those in ultra-poverty with a three-pronged approach.




1 Health Education

- Covers sanitation, family health, diet, disease prevention
- Empowers families to improve health practices
- Health screenings for common health challenges



2 Medical Treatment

- Pregnancy, malnutrition, tuberculosis, parasites
- Medical care for those who need it



3 Medical Mercy Program

- A special medical fund to cover surgical costs and treatment for those with more serious medical issues

Health Curriculum

- WELLNESS**
 - Disease Prevention
 - First Aid
 - Nutrition
- FAMILY**
 - Prenatal Care
 - Child Development
 - Reproductive Health
- SANITATION**
 - Hygiene
 - Clean Water
 - Public Health

8,075
children cured of malnutrition

12,129
high-risk pregnancies supported

316,297
people treated for parasites

Total impact 2014 - 2021



"Now I see that cleanliness is a simple thing, but it's a treasure for us to stay safe from illness. These health lessons helped me to be more aware during this pandemic."

JOLINA

Sustaining Healthy Living FLOURISH

During Transform, ICM invites a volunteer from the community to apprentice with the ICM Health Trainer to become a Community Health Champion. After Transform, Champions continue to visit participants, especially those with identified medical issues, to encourage treatments and healthy behaviors.

- 1,269** active health champions
- 129,116** clients monitored
- 407,498** households screened

Flourish is ICM's new monthly support meeting for Champions providing continued health education and patient support.

Hope Advances through Education

LAUNCHING CONFIDENT LEARNERS



The importance of education for children in low-income families cannot be overstated. Investing in early childhood education yields high returns, not only for children's academic success but also in higher-paying jobs as adults.

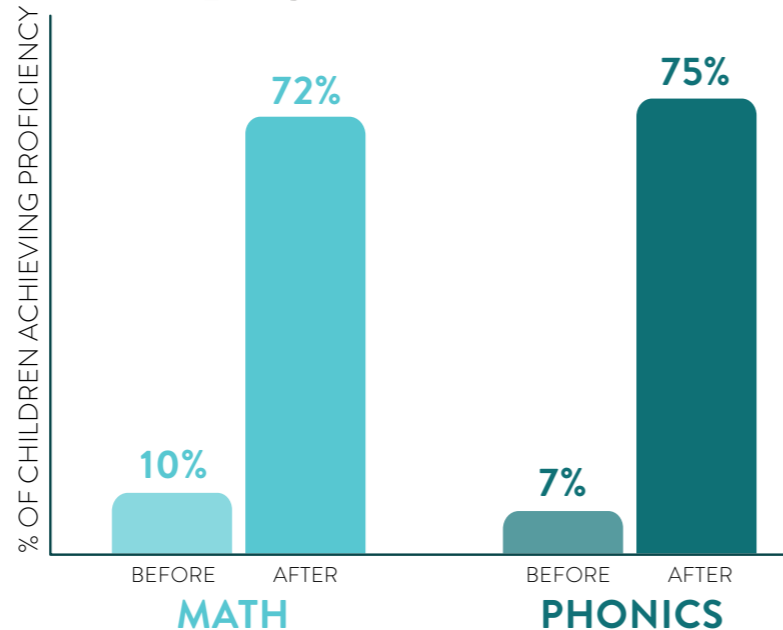
ICM's Family Academy empowers parents to be their children's first teachers. Through interactive games with colorful math and phonics flashcards, parents lead children into a love of learning, strengthening confidence along the way.

When kindergarten begins, preschoolers are emotionally and academically ready to thrive.

Family Academy Curriculum

- SCHOOL READINESS**
 - Math
 - Phonics
 - Vocabulary
- PARENTING SKILLS**
 - Behavior
 - Communication
 - Play
- PARENT - CHILD**
 - Acceptance
 - Encouragement
 - Discipline

Developing School Readiness



"I experienced the beauty of spending time with my children. I'm aware that I still have a lot of things to learn, but I treasure these moments where together we learn new things. We never experienced this kind of closeness before."

MELINE

9,227
children have graduated from Family Academy

Improved Attitudes and Behaviors in Parents

127%

increase in parents who think their children will graduate college (from 20% to 59%)

34%

increase in time spent in parent-child activities

Medical Mercy Program

One medical crisis can wipe out any progress in the fight against poverty.

When a child living in ultra-poverty faces a serious medical problem, the burden to the entire family is extensive. Medical costs mount leading to high-interest debt. Siblings drop out of school to earn income. Neighbors distance themselves.

Any hope of escaping poverty is extinguished as life overwhelms.

But one medical treatment can change everything.

ICM helps ultra-poor families get the medical care they need so hope for the future stays alive.

ICM walks every step of the way with patients in our Medical Mercy Program. We provide advice, nutritional supplements, transportation, and emotional support to help our patients fully recover, from the beginning to the end of their treatment journey.

TOTAL CASES
2014-2021

1,079
surgeries

10,516
medical cases

MEDICAL PARTNERS



1. Screening

Health assessments are a part of Transform.

2. Clinic visits

ICM sets appointments and accompanies patients for lab tests, x-rays, check-ups.

3. Preparation

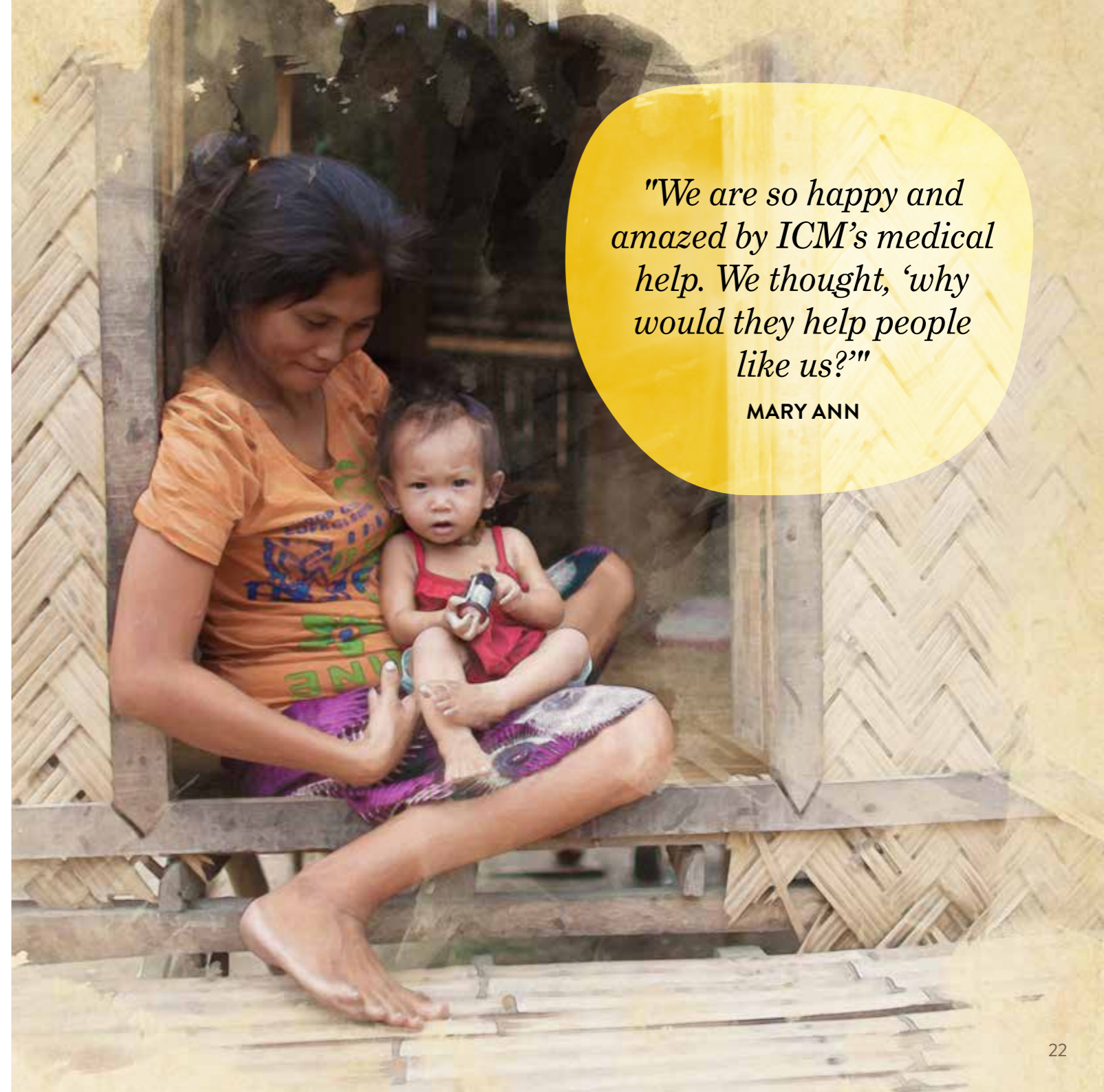
ICM ensures patients are ready for surgery and post-care.

4. Surgery

Some conditions require multiple operations or non-surgical treatments.

5. Follow-up

ICM staff check on patients throughout recovery.



"We are so happy and amazed by ICM's medical help. We thought, 'why would they help people like us?'"

MARY ANN

Thrive Partner Pastors

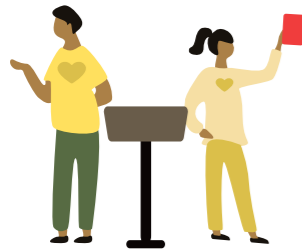
A NETWORK OF HOPE

Thrive is ICM's wide-reaching network of pastors who share our commitment to serving the poor. Our sacrificial partner pastors live among the very people ICM seeks to reach in remote mountain villages, coastal fishing communities, and urban slums.

Often very poor themselves, they lack the needed resources to meet the tangible needs of those they serve. These local leaders are ICM's ministry partners. Working together, we can achieve our common goal of bringing help, hope, and change to vulnerable families across the country.

WHO ARE OUR PARTNER PASTORS?

63% MALE
37% FEMALE



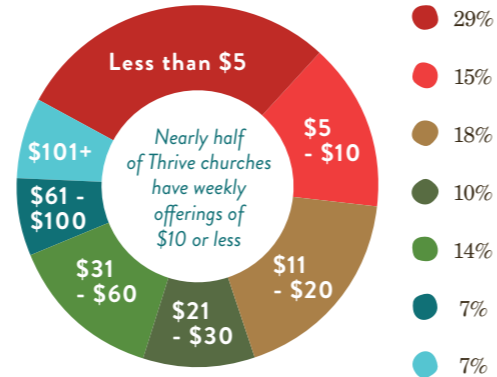
ICM

AVERAGE CHURCH SIZE

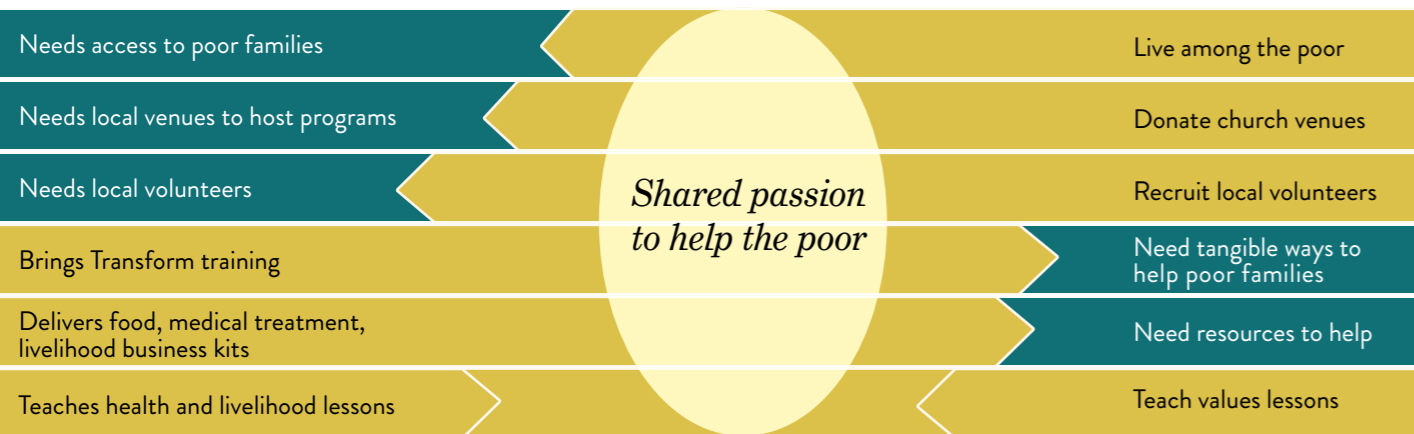


29 adults
16 children

WEEKLY OFFERINGS IN THRIVE CHURCHES (US\$)



PARTNER PASTORS



"These pastors are my lifeline. Getting together with a group of pastors who are facing similar challenges to talk and pray together is my only support network."

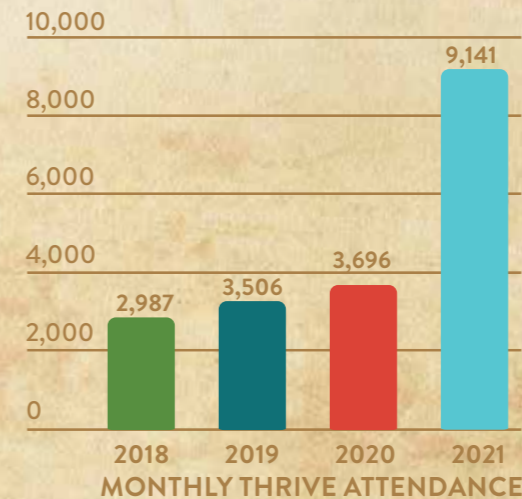
PASTOR JESSIE

Growth in 2020-2021

The Philippines' COVID-19 social gathering restrictions resulted in unexpected growth in ICM's Thrive pastor network.

In January 2021, ICM reorganized our 110 large Thrive Districts into five-to-ten-person small groups. Since then, 15,823 pastors are actively meeting in 1,931 pastor small groups for prayer, encouragement, and training each month.

The pastors' enthusiasm to meet in person is reflected in a doubling of attendance this year compared to prior years.



ICM supports Thrive pastors with monthly meetings delivering:

TRAINING

in ministry and leadership skills

HEALTH

support with personal checkups and funding for medical cases

RELATIONSHIP

building with ministry peers

IMPACT

opportunities through Transform, Prevail, Flourish

VISION

for becoming agents of change

ENCOURAGEMENT

for sustained ministry



"We never received any assistance from the government because we live far from town. We are so thankful ICM is willing to help us. Thank you for the food packs we received. Even just a little satisfies our hunger."

NANCY

Hope in Crisis

ICM'S COVID-19 RESPONSE

With the onset of COVID-19 and the resulting lockdowns in early 2020, ICM pivoted from its normal programs to address the urgent hunger problems of the country's poor. Anchored by ICM's 15,000-strong pastor network, ICM distributed unprecedented volumes of aid to families in need.

5,306,986
people reached

14,127,234
meals

314,773,130
vegetable seeds
for gardens

1,241,475
bars of soap

692,176
COVID-19 information
booklets

Transform during COVID-19

RESTART, RENEW, AND REFRESH

ICM remains nimble during COVID-19, adapting to ever-changing realities in each region. Beginning in late 2020 through May of 2021, ICM offered three different adaptations of Transform, each following local safety guidelines.

In total, during the COVID lockdowns, ICM graduated 147,876 family members through the Restart, Renew, and Refresh programs.

Transform Restart

- **415** Transform communities which had been postponed in early 2020
- **54,206** graduating family members

Transform 2R (Renew & Refresh)

short-term interventions for Transform alumni communities

RENEW

(six-week program)

- **558** Communities with lapsed savings groups
- **50,522** graduating alumni family members
- **99%** restarted savings groups with **80%** still active four months later

REFRESH

(three-week program)

- **354** communities with active savings groups
- **43,148** graduating alumni family members

33,118

recommitted savings group members

28,513

new vegetable gardens started

22,342

children remained active in school



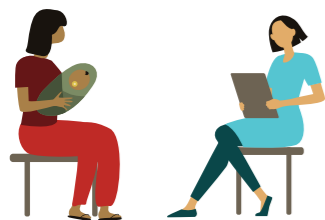
Research DRIVEN BY DATA

As thought leaders in solutions to poverty, ICM aims to always do better tomorrow than we did yesterday. ICM designs programs around results, not conjecture. By paying attention, we learn while doing.



FIRST-CLASS RESEARCH

- Dr. Lincoln Lau leads a strong team of postgraduates from major universities
- Long-running partnership with Innovations in Poverty Action
- Engagement with global development peers
- Global Innovation Fund joint venture



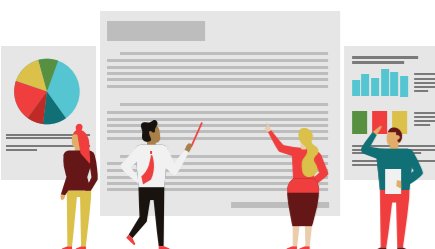
DATA INTEGRITY

- ICM staff are trained in rigorous and reliable data collection methodology
- Data is cleaned using high-frequency checks
- 200 million data points collected since 2009



STUDY DESIGN AND ANALYSIS

- ICM uses different research strategies for different contexts
- Randomized controlled trials test the impact of specific program components
- Sentinel surveys capture real-time snapshots and changes over time
- Pre/post surveys provide reality checks



DATA DISTRIBUTION

- DOMO dashboards pull data from multiple platforms providing real-time operational visibility for management
- ICM's research is published in academic journals
- Research team speaks at development conferences



Global Innovation Fund: Transform Innovation Lab





In partnership with the Global Innovation Fund, ICM is running a five-year Transform Innovation Lab. This project will test various components of Transform for even deeper, longer-lasting impact that will improve the lives of the world's poorest people at scale.

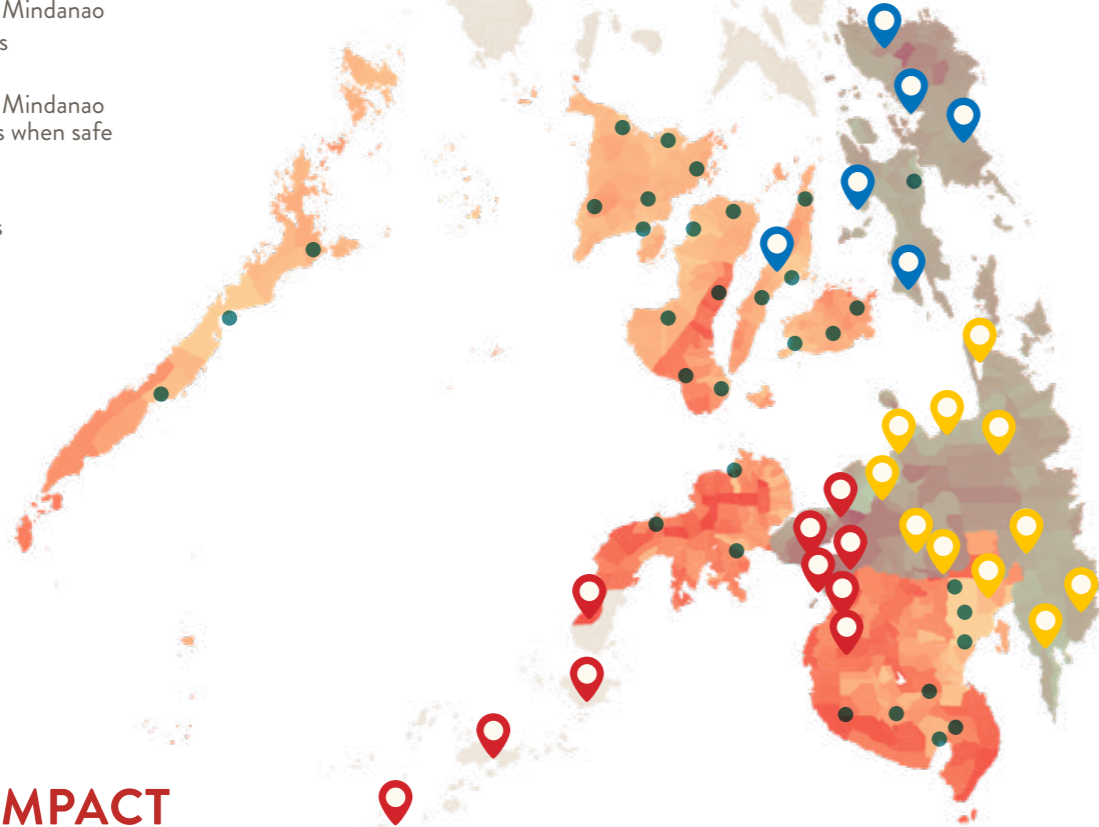
- *Can very small cash grants improve attendance and reduce attrition?*
- *Can video documentaries increase business uptake and savings group health?*
- *Will lengthening the duration of Transform increase its long-term impact?*
- *What is the measurable impact of ICM's Family Academy strategies on school readiness?*
- *How do ICM's new community health worker strategies impact family health?*
- *What is the return-on-investment of moderate (US\$20) and high (US\$250) cash grants per family?*

ICM is honored to partner with outstanding academic institutions that are committed to excellence in research.



The Momentum of Hope

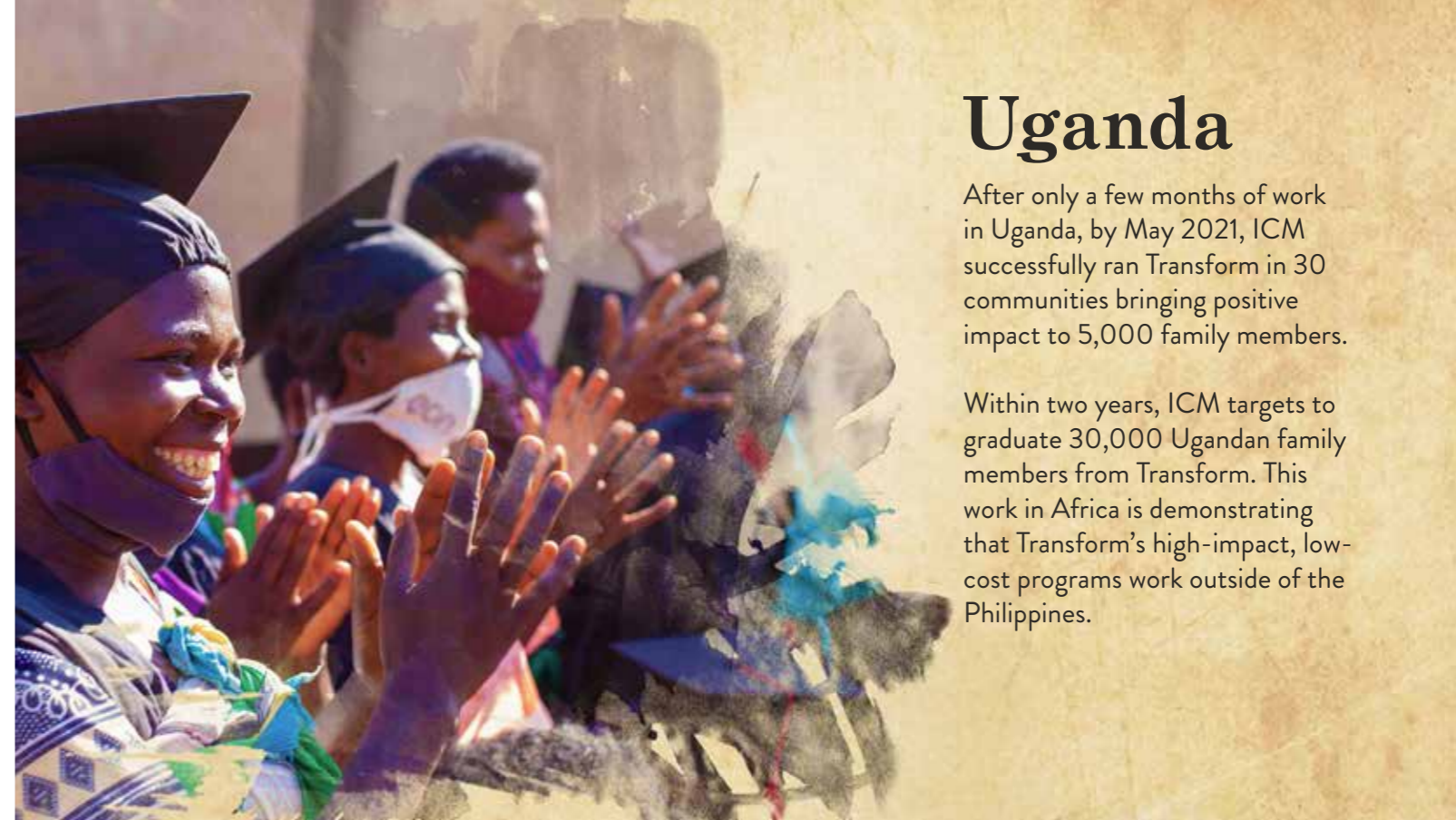
-  Planned Visayas Branches
-  Planned Mindanao Branches
-  Planned Mindanao branches when safe
-  Current Branches



WIDER IMPACT IN THE PHILIPPINES

In 2018, ICM reached the significant milestone of graduating our millionth Filipino family member through Transform.

Building capacity to reach the entire ultra-poor population in central and southern Philippines requires an additional six operational branches in the Visayas and an additional 22 branches in Mindanao. Each 12-member branch team can deliver Transform in 45 communities each year, bringing help, hope, and change to over 8,000 family members.



Uganda

After only a few months of work in Uganda, by May 2021, ICM successfully ran Transform in 30 communities bringing positive impact to 5,000 family members.

Within two years, ICM targets to graduate 30,000 Ugandan family members from Transform. This work in Africa is demonstrating that Transform's high-impact, low-cost programs work outside of the Philippines.

WIDER IMPACT INTERNATIONALLY

Guatemala

ICM's newest effort is a delivering a "lighter touch" version of Transform to Guatemala.

In the fall of 2021, ICM graduated its first batch of 14 communities and 2,500 family members.



Management Team



David Sutherland
Chief Executive Officer



David Jones
Chief Development Officer



Shelley Trebesch, PhD
Chief of Staff



Dale Sutherland
President ICM, USA



Daniel Mayhugh
Chief Operations Officer



Michael Coman
Chief Strategy Officer



Jesulito Cornejo
Chief Capacity Officer



Arlene De Leon
Chief Administrative Officer



Lincoln Lau, PhD
Director of Research



Joy Kimmel
Director of Information Technology



Edna Gonzales
Director of Mission Finance



Herman Moldez
Board Chair, ICM Manila



Winnie Chau
Director of Donor Services



Charles Cheng
Director of Finance



Louise Joachimowski
Director of Marketing and Communications



Charis Raya
Director of Strategic Partnerships



Deanna Sutherland
Executive Director

Philippine Field Staff

ICM's work in the Philippines is made possible by a heroic team of 604 talented men and women. One hundred percent of ICM team members stationed in the provinces are from the Philippines.



ICM **Branch Heads** oversee regional teams who directly deliver programs to the ultra-poor.



Health and Livelihood Trainers run the Transform program in poor communities.



Members of the **Metrics Team** capture impact through surveys and data collection.



Pastor Coordinators work with local pastors to build relationships and encourage program participation.



Medical Case Coordinators provide patient care that addresses medical needs.



Members of the **Support Team** keep everything running smoothly.



Family Academy Coordinators work with volunteers to encourage education-based parenting.



Communications Officers interview participants for stories and photos for donor reporting.



The **Logistics Team** coordinates staff transportation, facilities, and food storage.

2020-2021 Actual Financial Results

YEAR ENDING MAY 31, 2021 (in '000s)

PROGRAM	Philippine Pesos PHP	HK Dollars HK\$	US Dollars US\$	%
COMMUNITY PROGRAMS				
TRANSFORM VHL TRAINING (including 2R in 20-21)	196,974	32,119	4,143	38%
FEEDING	79,032	12,887	1,663	15%
EDUCATION (Family Academy)	18,171	2,963	382	4%
SUSTAINABILITY PROGRAMS				
THRIVE NETWORK (Pastor Training)	66,478	10,840	1,399	13%
PREVAIL (Savings Groups)	22,044	3,595	464	4%
FLOURISH (Community Health Champions)	-	-	-	0%
OTHER (Disaster Response, Health Services, etc.)	93,139	15,187	1,960	18%
INTERNATIONAL EXPANSION	10,735	1,750	226	2%
SUPPORT	29,444	4,801	620	6%
TOTAL ACTUAL	516,017	84,142	10,857	100%

In 2009-10 ICM reached 50,000 people, increasing to an expected 272,000 people in 2021-22. This is a 444% increase compared to our impact twelve years ago.

In 2020-21, ICM's budget was US\$15.3M and our actual expenses were US\$10.9M. This is mostly attributed to the reduction in donated food, which significantly decreased due to COVID-19 reduced production and shipment capacity.

To compensate for the reduction of incoming food donations, ICM purchased rice for distribution in poor communities. We also distributed food outside of our standard programs to help communities in great need of food due to the COVID-19 outbreak. Such costs are included in Disaster Response.

These pages consolidate the results of two ICM Philippine charities (ICM Foundation Inc. and ICM Manila Inc.) as well as certain costs incurred overseas which relate directly to poverty reduction. These pages exclude other costs from Hong Kong and the USA. Non-Philippine costs are supported by designated donations (including Banquet tables and tangible auction items, donations from the Board of Directors, and grants from a number of foundations) allowing virtually all other donations to go straight to the Philippines.

2021-2022 Budget

YEAR ENDING MAY 31, 2022 (in '000s)

PROGRAM	Philippine Pesos PHP	HK Dollars HK\$	US Dollars US\$	%
COMMUNITY PROGRAMS				
TRANSFORM VHL TRAINING	225,846	36,136	4,664	26%
FEEDING	333,995	53,439	6,895	38%
EDUCATION (Family Academy)	27,715	4,434	572	3%
SUSTAINABILITY PROGRAMS				
THRIVE NETWORK (Pastor Training)	92,047	14,728	1,900	11%
PREVAIL (Savings Groups)	32,088	5,134	662	4%
FLOURISH (Community Health Champions)	56,977	9,116	1,176	7%
OTHER (Disaster Response, Health Services, etc.)	39,965	6,394	825	5%
INTERNATIONAL EXPANSION	27,372	4,380	565	3%
SUPPORT	30,639	4,902	633	3%
TOTAL BUDGET	866,644	138,663	17,892	100%

In 2021-22, our budgeted expenditure is US\$17.9M, assuming that food distribution will be closer to pre-COVID-19 level. In addition, there is additional spending planned for new branches, expanded health programs, and research initiatives to enhance our Transform program.

The value of donated food distributed in 2020-21 was US\$2.8M, and ICM plans to distribute food valued at US\$7.8M in 2021-22. ICM expects to reach 272,000 people in 21-22 while keeping its program support expense to 3% of Philippine expenses.

ICM's financial statements in the Philippines are audited by SGV & Co., the largest accounting firm in the Philippines, an affiliate of Ernst & Young LLP. All of ICM's audited financial statements from the Philippines, Hong Kong, and the USA are available on our website.

ICM's books are open to our donors. Any questions about our finances? Just ask.

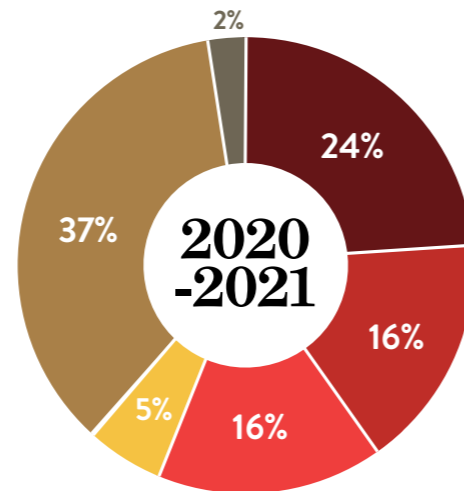
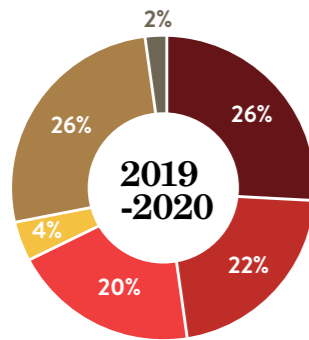


Partners

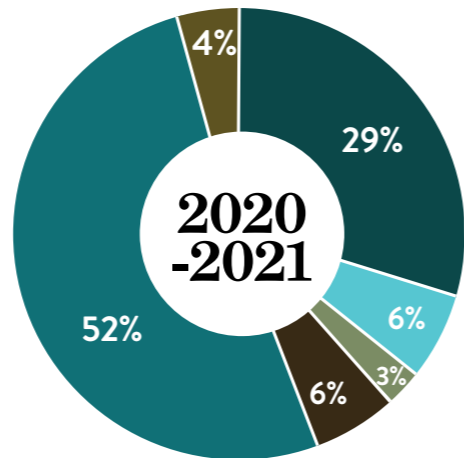
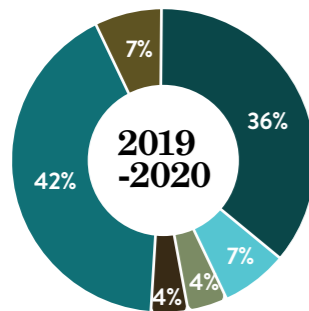
Historically, donors from Hong Kong have been the most important source of funding for ICM programs. Over the past several years, ICM has been actively developing new partnerships with individual donors and foundations outside Hong Kong. We are grateful that awareness of ICM's work is spreading, and resources for the work are diversifying internationally.



CASH DONATION BY COUNTRY



CASH DONATION BY SOURCE



In-Kind Partners

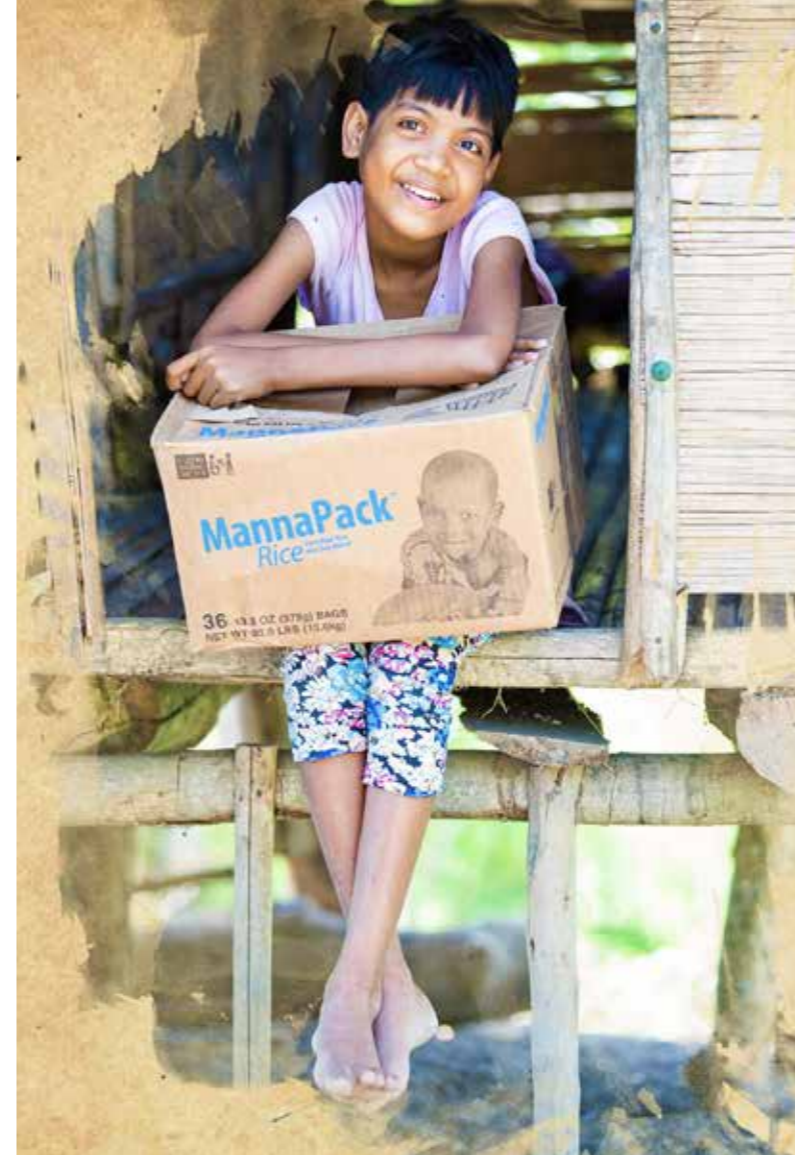
An important aspect of ICM's work is the ability to provide people with nutritious food and other essential resources. This is possible due to partnerships with other non-profit organizations that share common values and vision.

In 2020-21, ICM received 59 shipping containers of food (16.3 million meals) for distribution through our regular programs. ICM also received 33,000 bars of soap from Soap Cycling.

ICM also received food, masks, soap, toothpaste, vitamins, and seeds from various organizations to meet pressing needs that arose during COVID-19. ICM is grateful for the opportunity to channel these resources to poor communities in this time of great need.

While food and resources are donated, ICM incurs the cost of transportation from our in-kind partners to those in need. In critical situations, ICM also purchases rice.

The majority of domestic shipping within the Philippines is generously donated by Philippine Span Asia Carrier Corporation.



2021-22 FOOD BUDGET	28.7 million meals	105 shipping containers	Every US\$1 donated to support food transport results in 31 meals (worth US\$8.4) delivered to hungry children.
	US\$7.8 million value of donated food	US\$9,000 shipping cost per container	

Board of Advisors

ICM BENEFITS FROM THE GENEROUS COUNSEL OF A WIDE RANGE OF PROFESSIONALS

AUSTRALIA

Jim & Shasha Becker
Keith & Coralie Crews
Rae Doak
Russell & LiLi Fisher
Nick Foord
Marc & Nadia Geary
Don & Louise Hayman
Andrew & Nicole McPherson
Daniel & Ruth Spiritosanto
Verity Thomson
Harry & Julie Turner
Kara Wood

PHILIPPINES

Daphne Ceniza Kuok
Emmanuel Minana
Aissa Montecillo
John Nicholls
Eduardo & Miriam Quiambao-Roberto
Manuel C. San Diego
Joel & Stella Schapero
Marilyn Tan

HONG KONG

Nick & Terri Appel
Michael & Entela Benz
Stephen & Pam Birkett
Michael & Anne Sawyer Birley
Tim & Carrie Chen
Debbie Chin
Teresa Fox
Dennis Hopton
John Hsu (Singapore)
Brad Landes
Hubie Lem
Tess Lyons
Ramon & Vicki Maronilla
Nicholas & Jaclyn Norris
Michael & Patricia Openshaw
Henry & Kathy Shih
Mike & Ting Small

UNITED KINGDOM

Charles Mathias
Grayden Reece-Smith
Bridget Salmon

USA

Kenneth & Melizza Albolote
Mario & Christine Damo
Jose & Dinah Diao
Jamie & Kristine Duininck
Bill & Mary Hall
David & Eileen Helmer
Michele & Brad Rector
Carmen Schiffmann
Dave & Agnes Shull
Jim & Dede Schumachers
Wendy Smith
Crystal Stull

ICM, My Charity



"ICM is one of the most nimble and innovative poverty organizations on the planet."

BRUCE WYDICK



"From when we first started our journey together in 2006, ICM has come a long way. We especially love how families learn important life skills through Transform. Parents and children connect at a whole new level with what they learn."

DAVE & AGNES SHULL AND FAMILY



"We have witnessed ICM in action over the last 13 years and continue to be impressed with the efficiency and effectiveness of their programs. ICM's dedication, passion, and compassion has a lasting impact on those in need."

ANDREW & NICOLE MCPHERSON AND FAMILY

"ICM has been close to my heart and I am so thankful for this ministry that works tirelessly towards an audacious goal of giving HOPE to so many in desperate need."

DEBBIE CHIN





ICM is a registered charity in the Philippines, Hong Kong, and in the United States.

ICM partners with Entrust in Australia, with Stewardship in the UK, and with TGCF in Canada.



ICM contributes toward the achievement of the United Nation's Sustainable Development Goals including:



Please visit caremin.com to support ICM's work.



[IntlCareMinistries](https://www.instagram.com/intlcareministries)



facebook.com/internationalcareministries



info@caremin.com



linkedin.com/company/international-care-ministries/



caremin.com/blog



vimeo.com/intlcareministries



PHILIPPINES: Unit W-1701, 17th Floor, Philippine Stock Exchange Center, Exchange Road, Ortigas Center, Pasig City, 1605 (+632 8 571-6975)

HONG KONG: 7B, Gold Union Commercial Building, 71 Connaught Rd West, Sheung Wan (+852-3470-3009)

UNITED STATES: 491 A1A Beach Blvd., St. Augustine, FL 32080 (+1 973-216-8761)